

Product Name: Olfactory receptor 2T2/35 Rabbit Polyclonal Antibody**Catalog #: APRab15204**

For research use only.

Summary

Description	Rabbit polyclonal Antibody
Host	Rabbit
Application	WB,ICC/IF,ELISA
Reactivity	Human,Rat,Mouse
Conjugation	Unconjugated
Modification	Unmodified
Isotype	IgG
Clonality	Polyclonal
Form	Liquid
Concentration	1mg/ml
Storage	Aliquot and store at -20°C (valid for 12 months). Avoid freeze/thaw cycles.
Shipping	Ice bags
Buffer	Liquid in PBS containing 50% glycerol, 0.5% protective protein and 0.02% New type preservative N.
Purification	Affinity purification

Application

Dilution Ratio	WB 1:500-1:2000,ICC/IF 1:200-1:1000,ELISA 1:5000-1:10000
Molecular Weight	34kDa

Antigen Information

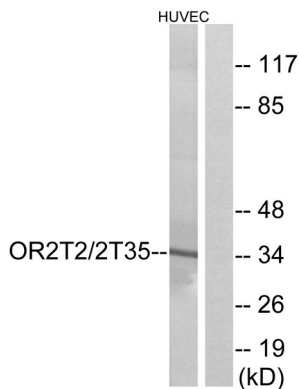
Gene Name	OR2T2/OR2T35
Alternative Names	OR2T35; Olfactory receptor 2T35; Olfactory receptor OR1-66; OR2T2; OR2T2P; Olfactory receptor 2T2; Olfactory receptor OR1-43
Gene ID	403244/401992
SwissProt ID	Q8NGX2/Q6IF00
Immunogen	The antiserum was produced against synthesized peptide derived from human OR2T2/2T35. AA range:61-110

Background

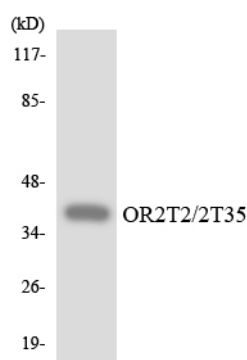
Olfactory receptors interact with odorant molecules in the nose, to initiate a neuronal response that triggers the perception of a smell. The olfactory receptor proteins are members of a large family of G-protein-coupled receptors (GPCR) arising from single coding-exon genes. Olfactory receptors share a 7-transmembrane domain structure with many neurotransmitter and hormone receptors and are responsible for the recognition and G protein-mediated transduction of odorant signals. The olfactory receptor gene family is the largest in the genome. The nomenclature assigned to the olfactory receptor genes and proteins for this organism is independent of other organisms. [provided by RefSeq, Jul 2008],function:Odorant receptor „similarity:Belongs to the G-protein coupled receptor 1 family,,

Research Area

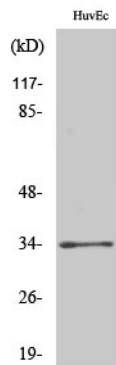
Image Data



Western blot analysis of lysates from HUVEC cells, using OR2T2/2T35 Antibody. The lane on the right is blocked with the synthesized peptide.



Western blot analysis of the lysates from HepG2 cells using OR2T2/2T35 antibody.



Western Blot analysis of various cells using Olfactory receptor 2T2/35 Polyclonal Antibody diluted at 1 : 500