

---

**Product Name: Olfactory receptor 2K2 Rabbit Polyclonal Antibody****Catalog #: APRab15196**

For research use only.

**Summary**

<b>Description</b>	Rabbit polyclonal Antibody
<b>Host</b>	Rabbit
<b>Application</b>	WB,ICC/IF,ELISA
<b>Reactivity</b>	Human,Rat,Mouse
<b>Conjugation</b>	Unconjugated
<b>Modification</b>	Unmodified
<b>Isotype</b>	IgG
<b>Clonality</b>	Polyclonal
<b>Form</b>	Liquid
<b>Concentration</b>	1mg/ml
<b>Storage</b>	Aliquot and store at -20°C (valid for 12 months). Avoid freeze/thaw cycles.
<b>Shipping</b>	Ice bags
<b>Buffer</b>	Liquid in PBS containing 50% glycerol, 0.5% protective protein and 0.02% New type preservative N.
<b>Purification</b>	Affinity purification

**Application**

<b>Dilution Ratio</b>	WB 1:500-1:2000,ICC/IF 1:200-1:1000,ELISA 1:5000-1:20000
<b>Molecular Weight</b>	35kDa

**Antigen Information**

<b>Gene Name</b>	OR2K2
<b>Alternative Names</b>	OR2K2; OR2AR1P; Olfactory receptor 2K2; HTPCRH06; Olfactory receptor OR9-17
<b>Gene ID</b>	26248.0
<b>SwissProt ID</b>	Q8NGT1
<b>Immunogen</b>	The antiserum was produced against synthesized peptide derived from human OR2K2. AA range:241-290

**Background**

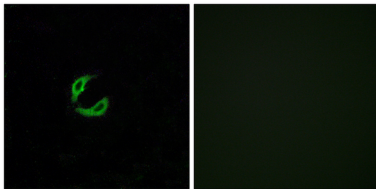
olfactory receptor family 2 subfamily K member 2(OR2K2) Homo sapiens Olfactory receptors interact with odorant molecules

in the nose, to initiate a neuronal response that triggers the perception of a smell. The olfactory receptor proteins are members of a large family of G-protein-coupled receptors (GPCR) arising from single coding-exon genes. Olfactory receptors share a 7-transmembrane domain structure with many neurotransmitter and hormone receptors and are responsible for the recognition and G protein-mediated transduction of odorant signals. The olfactory receptor gene family is the largest in the genome. The nomenclature assigned to the olfactory receptor genes and proteins for this organism is independent of other organisms. [provided by RefSeq, Jul 2008],caution:It is uncertain whether Met-1 or Met-30 is the initiator.,function:Odorant receptor .,similarity:Belongs to the G-protein coupled receptor 1 family.,

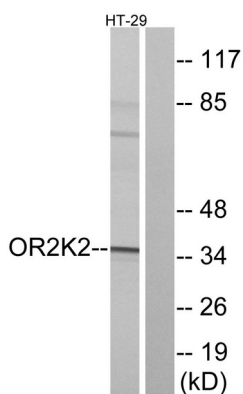
## Research Area

Olfactory transduction;

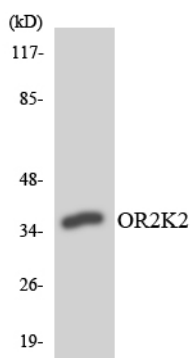
## Image Data



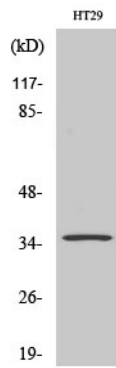
Immunofluorescence analysis of A549 cells, using OR2K2 Antibody. The picture on the right is blocked with the synthesized peptide.



Western blot analysis of lysates from HT-29 cells, using OR2K2 Antibody. The lane on the right is blocked with the synthesized peptide.



Western blot analysis of the lysates from HepG2 cells using OR2K2 antibody.



Western Blot analysis of various cells using Olfactory receptor 2K2 Polyclonal Antibody