

Product Name: Olfactory receptor 2J2 Rabbit Polyclonal Antibody**Catalog #: APRab15194**

For research use only.

Summary

| | |
|----------------------|---|
| Description | Rabbit polyclonal Antibody |
| Host | Rabbit |
| Application | WB,ICC/IF,ELISA |
| Reactivity | Human,Rat,Mouse |
| Conjugation | Unconjugated |
| Modification | Unmodified |
| Isotype | IgG |
| Clonality | Polyclonal |
| Form | Liquid |
| Concentration | 1mg/ml |
| Storage | Aliquot and store at -20°C (valid for 12 months). Avoid freeze/thaw cycles. |
| Shipping | Ice bags |
| Buffer | Liquid in PBS containing 50% glycerol, 0.5% protective protein and 0.02% New type preservative N. |
| Purification | Affinity purification |

Application

| | |
|-------------------------|---|
| Dilution Ratio | WB 1:500-1:2000,ICC/IF 1:200-1:1000,ELISA 1:10000-1:20000 |
| Molecular Weight | 35kDa |

Antigen Information

| | |
|--------------------------|---|
| Gene Name | OR2J2 |
| Alternative Names | |
| Gene ID | 26707.0 |
| SwissProt ID | O76002/Q5SUJ6/Q5SUJ7 |
| Immunogen | The antiserum was produced against synthesized peptide derived from human OR2J2. AA range:263-312 |

Background

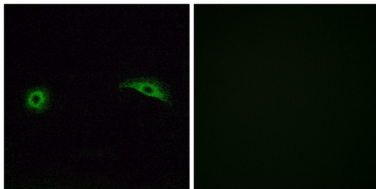
olfactory receptor family 2 subfamily J member 2(OR2J2) Homo sapiens Olfactory receptors interact with odorant molecules

in the nose, to initiate a neuronal response that triggers the perception of a smell. The olfactory receptor proteins are members of a large family of G-protein-coupled receptors (GPCR) arising from single coding-exon genes. Olfactory receptors share a 7-transmembrane domain structure with many neurotransmitter and hormone receptors and are responsible for the recognition and G protein-mediated transduction of odorant signals. The olfactory receptor gene family is the largest in the genome. The nomenclature assigned to the olfactory receptor genes and proteins for this organism is independent of other organisms. [provided by RefSeq, Jul 2008],function:Odorant receptor .,polymorphism:Three OR2J2 alleles are known: 6M1-6*01, 6M1-6*02 and 6M1-6*03. The sequence shown is that of allele 6M1-6*01.,similarity:Belongs to the G-protein coupled receptor 1 family.,

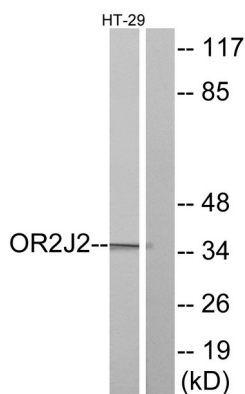
Research Area

Olfactory transduction;

Image Data



Immunofluorescence analysis of A549 cells, using OR2J2 Antibody. The picture on the right is blocked with the synthesized peptide.



Western blot analysis of lysates from HT-29 cells, using OR2J2 Antibody. The lane on the right is blocked with the synthesized peptide.



Western Blot analysis of various cells using Olfactory receptor 2J2 Polyclonal Antibody