
Product Name: Olfactory receptor 2AG1/2 Rabbit Polyclonal Antibody**Catalog #: APRab15178**

For research use only.

Summary

Description	Rabbit polyclonal Antibody
Host	Rabbit
Application	WB,ICC/IF,ELISA
Reactivity	Human,Rat,Mouse
Conjugation	Unconjugated
Modification	Unmodified
Isotype	IgG
Clonality	Polyclonal
Form	Liquid
Concentration	1mg/ml
Storage	Aliquot and store at -20°C (valid for 12 months). Avoid freeze/thaw cycles.
Shipping	Ice bags
Buffer	Liquid in PBS containing 50% glycerol, 0.5% protective protein and 0.02% New type preservative N.
Purification	Affinity purification

Application

Dilution Ratio	WB 1:500-1:2000,ICC/IF 1:200-1:1000,ELISA 1:5000-1:20000
Molecular Weight	35kDa

Antigen Information

Gene Name	OR2AG1/OR2AG2
Alternative Names	OR2AG1; OR2AG3; Olfactory receptor 2AG1; HT3; Olfactory receptor 2AG3; Olfactory receptor OR11-79; OR2AG2; OR2AG2P; Olfactory receptor 2AG2
Gene ID	144125/338755
SwissProt ID	Q9H205/A6NM03
Immunogen	The antiserum was produced against synthesized peptide derived from human OR2AG1/2AG2. AA range:61-110

Background

Olfactory receptors interact with odorant molecules in the nose, to initiate a neuronal response that triggers the perception of a smell. The olfactory receptor proteins are members of a large family of G-protein-coupled receptors (GPCR) arising from single coding-exon genes. Olfactory receptors share a 7-transmembrane domain structure with many neurotransmitter and hormone receptors and are responsible for the recognition and G protein-mediated transduction of odorant signals. The olfactory receptor gene family is the largest in the genome. The nomenclature assigned to the olfactory receptor genes and proteins for this organism is independent of other organisms. This olfactory receptor gene is a segregating pseudogene, where some individuals have an allele that encodes a functional olfactory receptor, while other individuals have an allele encoding a function:Odorant receptor „similarity:Belongs to the G-protein coupled receptor 1 family.,

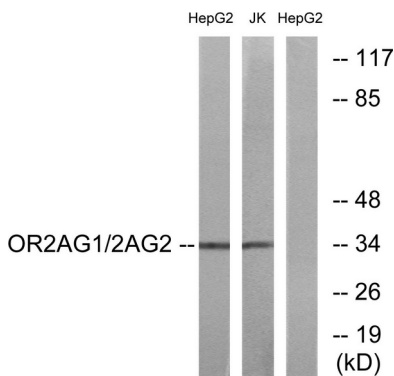
Research Area

Olfactory transduction;

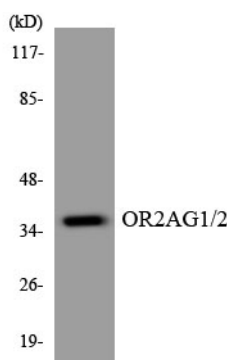
Image Data



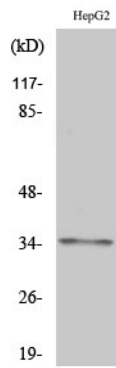
Immunofluorescence analysis of A549 cells, using OR2AG1/2AG2 Antibody. The picture on the right is blocked with the synthesized peptide.



Western blot analysis of lysates from HepG2 and Jurkat cells, using OR2AG1/2AG2 Antibody. The lane on the right is blocked with the synthesized peptide.



Western blot analysis of the lysates from HT-29 cells using OR2AG1/2 antibody.



Western Blot analysis of various cells using Olfactory receptor 2AG1/2 Polyclonal Antibody