

**Product Name: Olfactory receptor 2AG1/2 Rabbit Polyclonal Antibody****Catalog #: APRab15177**

For research use only.

**Summary**

<b>Description</b>	Rabbit polyclonal Antibody
<b>Host</b>	Rabbit
<b>Application</b>	WB,ICC/IF,ELISA
<b>Reactivity</b>	Human,Rat,Mouse
<b>Conjugation</b>	Unconjugated
<b>Modification</b>	Unmodified
<b>Isotype</b>	IgG
<b>Clonality</b>	Polyclonal
<b>Form</b>	Liquid
<b>Concentration</b>	1mg/ml
<b>Storage</b>	Aliquot and store at -20°C (valid for 12 months). Avoid freeze/thaw cycles.
<b>Shipping</b>	Ice bags
<b>Buffer</b>	Liquid in PBS containing 50% glycerol, 0.5% protective protein and 0.02% New type preservative N.
<b>Purification</b>	Affinity purification

**Application**

<b>Dilution Ratio</b>	WB 1:500-1:2000,ICC/IF 1:200-1:1000,ELISA 1:5000-1:10000
<b>Molecular Weight</b>	34kDa

**Antigen Information**

<b>Gene Name</b>	OR2AG1/2
<b>Alternative Names</b>	OR2AG2; OR2AG2P; Olfactory receptor 2AG2; OR2AG1; OR2AG3; Olfactory receptor 2AG1; HT3; Olfactory receptor 2AG3; Olfactory receptor OR11-79
<b>Gene ID</b>	144125/338755
<b>SwissProt ID</b>	A6NM03/Q9H205
<b>Immunogen</b>	The antiserum was produced against synthesized peptide derived from human OR2AG1/2AG2. AA range:61-110

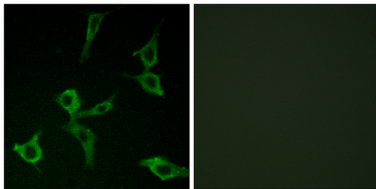
**Background**

Olfactory receptors interact with odorant molecules in the nose, to initiate a neuronal response that triggers the perception of a smell. The olfactory receptor proteins are members of a large family of G-protein-coupled receptors (GPCR) arising from single coding-exon genes. Olfactory receptors share a 7-transmembrane domain structure with many neurotransmitter and hormone receptors and are responsible for the recognition and G protein-mediated transduction of odorant signals. The olfactory receptor gene family is the largest in the genome. The nomenclature assigned to the olfactory receptor genes and proteins for this organism is independent of other organisms. [provided by RefSeq, Jul 2008],function:Odorant receptor „similarity:Belongs to the G-protein coupled receptor 1 family,,

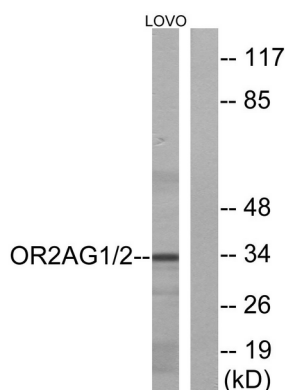
## Research Area

Olfactory transduction;

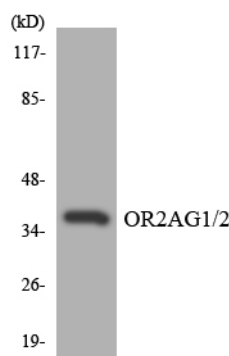
## Image Data



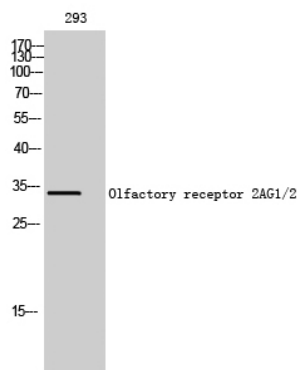
Immunofluorescence analysis of LOVO cells, using OR2AG1/2AG2 Antibody. The picture on the right is blocked with the synthesized peptide.



Western blot analysis of lysates from LOVO cells, using OR2AG1/2AG2 Antibody. The lane on the right is blocked with the synthesized peptide.



Western blot analysis of the lysates from HeLa cells using OR2AG1/2 antibody.



Western Blot analysis of 293 cells using Olfactory receptor 2AG1/2 Polyclonal Antibody diluted at 1 : 500