

Product Name: OGFR Rabbit Polyclonal Antibody**Catalog #: APRab15121**

For research use only.

Summary

Description	Rabbit polyclonal Antibody
Host	Rabbit
Application	WB,ELISA
Reactivity	Human
Conjugation	Unconjugated
Modification	Unmodified
Isotype	IgG
Clonality	Polyclonal
Form	Liquid
Concentration	1mg/ml
Storage	Aliquot and store at -20°C (valid for 12 months). Avoid freeze/thaw cycles.
Shipping	Ice bags
Buffer	Liquid in PBS containing 50% glycerol, 0.5% protective protein and 0.02% New type preservative N.
Purification	Affinity purification

Application

Dilution Ratio	WB 1:500-1:2000,ELISA 1:10000-1:20000
Molecular Weight	90kDa

Antigen Information

Gene Name	OGFR
Alternative Names	OGFR; Opioid growth factor receptor; OGF _r ; Protein 7-60; Zeta-type opioid receptor
Gene ID	11054.0
SwissProt ID	Q9NZT2
Immunogen	The antiserum was produced against synthesized peptide derived from human OGFR. AA range:138-187

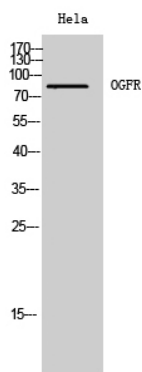
Background

The protein encoded by this gene is a receptor for opioid growth factor (OGF), also known as [Met(5)]-enkephalin. OGF is a

negative regulator of cell proliferation and tissue organization in a variety of processes. The encoded unbound receptor for OGF has been localized to the outer nuclear envelope, where it binds OGF and is translocated into the nucleus. The coding sequence of this gene contains a polymorphic region of 60 nt tandem imperfect repeat units. Several transcripts containing between zero and eight repeat units have been reported. [provided by RefSeq, Jul 2008],function:Receptor for opioid growth factor (OGF), also known as Met-enkephalin. Seems to be involved in growth regulation.,online information:OGFr entry,PTM:Phosphorylated upon DNA damage, probably by ATM or ATR.,similarity:Belongs to the opioid growth factor receptor family.,subcellular location:The OGF/OGFR complex is probably translocated to the nucleus.,tissue specificity:Highly expressed in the heart and liver, moderately in skeletal muscle and kidney and to a lesser extent in brain and pancreas. Expressed in fetal tissues including liver and kidney.,

Research Area

Image Data



Western Blot analysis of HeLa cells using OGFR Polyclonal Antibody