

Product Name: NXF3 Rabbit Polyclonal Antibody**Catalog #: APRab14995**

For research use only.

Summary

Description	Rabbit polyclonal Antibody
Host	Rabbit
Application	WB,IHC,ICC/IF,ELISA
Reactivity	Human,Rat,Mouse
Conjugation	Unconjugated
Modification	Unmodified
Isotype	IgG
Clonality	Polyclonal
Form	Liquid
Concentration	1mg/ml
Storage	Aliquot and store at -20°C (valid for 12 months). Avoid freeze/thaw cycles.
Shipping	Ice bags
Buffer	Liquid in PBS containing 50% glycerol, 0.5% protective protein and 0.02% New type preservative N.
Purification	Affinity purification

Application

Dilution Ratio	WB 1:500-1:2000,IHC 1:100-1:300,ICC/IF 1:50-1:200,ELISA 1:20000-1:40000
Molecular Weight	60kDa

Antigen Information

Gene Name	NXF3
Alternative Names	NXF3; TAPL3; Nuclear RNA export factor 3; TAP-like protein 3; TAPL-3
Gene ID	56000.0
SwissProt ID	Q9H4D5
Immunogen	The antiserum was produced against synthesized peptide derived from human NXF3. AA range:72-121

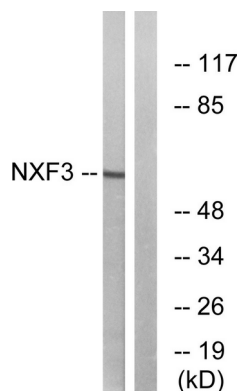
Background

This gene is one member of a family of nuclear RNA export factor genes. Common domain features of this family are a

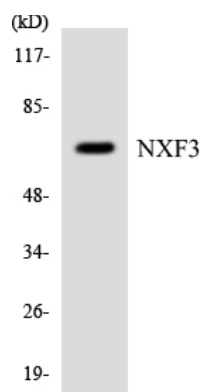
noncanonical RNP-type RNA-binding domain (RBD), 4 leucine-rich repeats (LRRs), a nuclear transport factor 2 (NTF2)-like domain that allows heterodimerization with NTF2-related export protein-1 (NXT1), and a ubiquitin-associated domain that mediates interactions with nucleoporins. The LRRs and NTF2-like domains are required for export activity. Alternative splicing seems to be a common mechanism in this gene family. The encoded protein of this gene has shortened LRR and ubiquitin-associated domains and its RDB is unable to bind RNA. It is located in the nucleoplasm but is not associated with either the nuclear envelope or the nucleolus. [provided by RefSeq, Jul 2008],domain:Contains a novel CRM1-dependent nuclear export signal that compensates in cis for the loss of the nuclear pore targeting domain.,domain:Lacks C-terminal domain that mediates direct interactions with nucleoporins.,function:May function as a tissue-specific nuclear mRNA export factor.,miscellaneous:The RNA-binding domain is a non-canonical RNP-type domain.,similarity:Belongs to the NXF family.,similarity:Contains 1 LRR (leucine-rich) repeat.,similarity:Contains 1 NTF2 domain.,similarity:Contains 1 RRM (RNA recognition motif) domain.,subcellular location:Shuttles between the nucleus and the cytoplasm.,subunit:Interacts with NXT1, NXT2, E1B-AP5 and CRM1 nuclear export factor.,tissue specificity:Expressed at high level in testis and at low level in a small number of tissues.,

Research Area

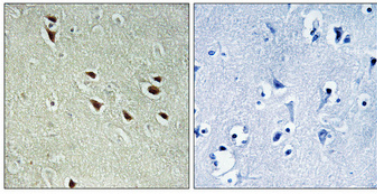
Image Data



Western blot analysis of lysates from MCF-7 cells, using NXF3 Antibody. The lane on the right is blocked with the synthesized peptide.



Western blot analysis of the lysates from HepG2 cells using NXF3 antibody.



Immunohistochemical analysis of paraffin-embedded Human brain. Antibody was diluted at 1:100 (4°, overnight) . High-pressure and temperature Tris-EDTA, pH 8.0 was used for antigen retrieval. Negative control (right) obtained from antibody was pre-absorbed by immunogen peptide.