
Product Name: NUF2 Rabbit Polyclonal Antibody**Catalog #: APRab14974**

For research use only.

Summary

Description	Rabbit polyclonal Antibody
Host	Rabbit
Application	WB,ELISA
Reactivity	Human,Mouse
Conjugation	Unconjugated
Modification	Unmodified
Isotype	IgG
Clonality	Polyclonal
Form	Liquid
Concentration	1mg/ml
Storage	Aliquot and store at -20°C (valid for 12 months). Avoid freeze/thaw cycles.
Shipping	Ice bags
Buffer	Liquid in PBS containing 50% glycerol, and 0.02% New type preservative N.
Purification	Affinity purification

Application

Dilution Ratio	WB 1:500-1:2000,ELISA 1:5000-1:20000
Molecular Weight	76kDa

Antigen Information

Gene Name	NUFIP2 KIAA1321 PIG1
Alternative Names	
Gene ID	57532.0
SwissProt ID	Q7Z417
Immunogen	Synthesized peptide derived from human protein . at AA range: 180-260

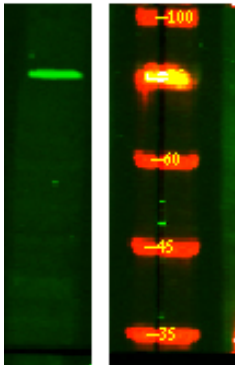
Background

function: Binds RNA.,PTM: Phosphorylated upon DNA damage, probably by ATM or ATR.,subcellular location: Distribution is cell cycle-modulated, being cytoplasmic in the G2/M phase and accumulating in nucleus during the G1 phase.,subunit: Interacts with FMRP.,function: Binds RNA.,PTM: Phosphorylated upon DNA damage, probably by ATM or ATR.,subcellular

location: Distribution is cell cycle-modulated, being cytoplasmic in the G2/M phase and accumulating in nucleus during the G1 phase., subunit: Interacts with FMRP.,

Research Area

Image Data



Western Blot analysis of HeLa lysis, using primary antibody at 1:1000 dilution. Secondary antibody was diluted at 1:10000