

Product Name: NUB1 Rabbit Polyclonal Antibody**Catalog #: APRab14949**

For research use only.

Summary

Description	Rabbit polyclonal Antibody
Host	Rabbit
Application	WB,IHC,ICC/IF,ELISA
Reactivity	Human,Mouse,Monkey
Conjugation	Unconjugated
Modification	Unmodified
Isotype	IgG
Clonality	Polyclonal
Form	Liquid
Concentration	1mg/ml
Storage	Aliquot and store at -20°C (valid for 12 months). Avoid freeze/thaw cycles.
Shipping	Ice bags
Buffer	Liquid in PBS containing 50% glycerol, 0.5% protective protein and 0.02% New type preservative N.
Purification	Affinity purification

Application

Dilution Ratio	WB 1:500-1:2000,IHC 1:100-1:300,ICC/IF 1:50-1:200,ELISA 1:10000-1:20000
Molecular Weight	70kDa

Antigen Information

Gene Name	NUB1
Alternative Names	NUB1; NYREN18; NEDD8 ultimate buster 1; Negative regulator of ubiquitin-like proteins 1; Renal carcinoma antigen NY-REN-18
Gene ID	51667.0
SwissProt ID	Q9Y5A7
Immunogen	The antiserum was produced against synthesized peptide derived from human NYREN18. AA range:566-615

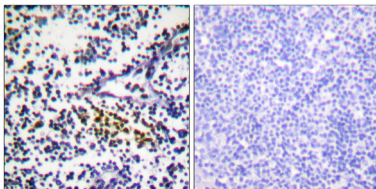
Background

This gene encodes a protein that functions as a negative regulator of NEDD8, a ubiquitin-like protein that conjugates with cullin family members in order to regulate vital biological events. The protein encoded by this gene regulates the NEDD8 conjugation system post-transcriptionally by recruiting NEDD8 and its conjugates to the proteasome for degradation. This protein interacts with the product of the AIPL1 gene, which is associated with Leber congenital amaurosis, an inherited retinopathy, and mutations in that gene can abolish interaction with this protein, which may contribute to the pathogenesis. This protein is also known to accumulate in Lewy bodies in Parkinson's disease and dementia with Lewy bodies, and in glial cytoplasmic inclusions in multiple system atrophy, with this abnormal accumulation being specific to alpha-synucleinopathy lesions. Alternative splicing function: Specific down-regulator of the NEDD8 conjugation system. Recruits NEDD8 and its conjugates to the proteasome for degradation. Isoform 1 promotes the degradation of NEDD8 more efficiently than isoform 2. induction: By beta and gamma interferons. similarity: Contains 3 UBA domains. subcellular location: Predominantly nuclear. subunit: Directly interacts with NEDD8 and PSMD4/S5a, a member of the regulatory subunit of the 26S proteasome. Isoform 1 binds to NEDD8 more efficiently than isoform 2. Interacts with AIPL1. tissue specificity: Widely expressed with lowest expression in the pancreas for isoform 1 and in leukocytes, liver, prostate and skeletal muscle for isoform 2.

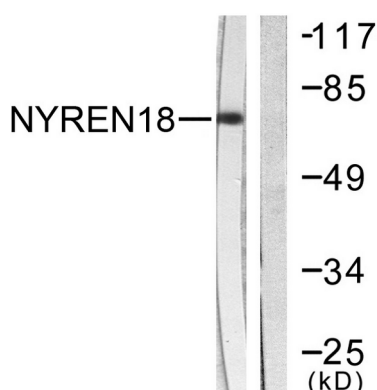
Research Area

Cell Biology; Proteolysis / Ubiquitin; Proteasome / Ubiquitin; Proteasome

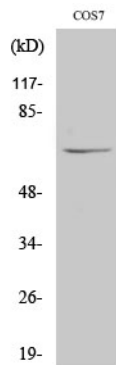
Image Data



Immunohistochemistry analysis of paraffin-embedded human tonsil tissue, using NYREN18 Antibody. The picture on the right is blocked with the synthesized peptide.



Western blot analysis of lysates from COS7 cells, using NYREN18 Antibody. The lane on the right is blocked with the synthesized peptide.



Western Blot analysis of various cells using NUB1 Polyclonal Antibody diluted at 1: 2000 cells nucleus extracted by Minute TM Cytoplasmic and Nuclear Fractionation kit (SC-003, Invent biotech, MN, USA) .