

Product Name: NTR1 Rabbit Polyclonal Antibody**Catalog #: APRab14932**

For research use only.

Summary

Description	Rabbit polyclonal Antibody
Host	Rabbit
Application	WB,IHC,ICC/IF,ELISA
Reactivity	Human,Mouse
Conjugation	Unconjugated
Modification	Unmodified
Isotype	IgG
Clonality	Polyclonal
Form	Liquid
Concentration	1mg/ml
Storage	Aliquot and store at -20°C (valid for 12 months). Avoid freeze/thaw cycles.
Shipping	Ice bags
Buffer	Liquid in PBS containing 50% glycerol, 0.5% protective protein and 0.02% New type preservative N.
Purification	Affinity purification

Application

Dilution Ratio	WB 1:500-1:2000,IHC 1:100-1:300,ICC/IF 1:200-1:1000,ELISA 1:5000-1:10000
Molecular Weight	46kDa

Antigen Information

Gene Name	NTSR1
Alternative Names	NTSR1; NTRR; Neurotensin receptor type 1; NT-R-1; NTR1; High-affinity levocabastine-insensitive neurotensin receptor; NTRH
Gene ID	4923.0
SwissProt ID	P30989
Immunogen	The antiserum was produced against synthesized peptide derived from human NTR1. AA range:181-230

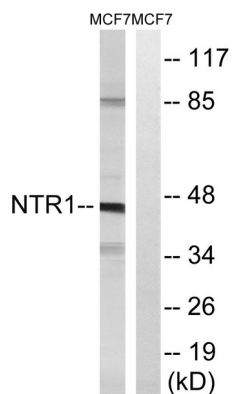
Background

Neurotensin receptor 1 belongs to the large superfamily of G-protein coupled receptors. NTSR1 mediates the multiple functions of neurotensin, such as hypotension, hyperglycemia, hypothermia, antinociception, and regulation of intestinal motility and secretion. [provided by RefSeq, Jul 2008],function:Receptor for the tridecapeptide neurotensin. It is associated with G proteins that activate a phosphatidylinositol-calcium second messenger system.,online information:Neurotensin receptor entry,similarity:Belongs to the G-protein coupled receptor 1 family.,

Research Area

Calcium;Neuroactive ligand-receptor interaction;

Image Data



Western blot analysis of lysates from MCF7 cells, using NTR1 Antibody. The lane on the right is blocked with the synthesized peptide.