

Product Name: NTN Rabbit Polyclonal Antibody**Catalog #: APRab14930**

For research use only.

Summary

Description	Rabbit polyclonal Antibody
Host	Rabbit
Application	WB,ELISA
Reactivity	Human,Rat,Mouse
Conjugation	Unconjugated
Modification	Unmodified
Isotype	IgG
Clonality	Polyclonal
Form	Liquid
Concentration	1mg/ml
Storage	Aliquot and store at -20°C (valid for 12 months). Avoid freeze/thaw cycles.
Shipping	Ice bags
Buffer	Liquid in PBS containing 50% glycerol, 0.5% protective protein and 0.02% New type preservative N.
Purification	Affinity purification

Application

Dilution Ratio	WB 1:500-1:2000,ELISA 1:5000-1:20000
Molecular Weight	22kDa

Antigen Information

Gene Name	NRTN
Alternative Names	NRTN; Neurturin
Gene ID	4902.0
SwissProt ID	Q99748
Immunogen	The antiserum was produced against synthesized peptide derived from the Internal region of human NRTN. AA range:111-160

Background

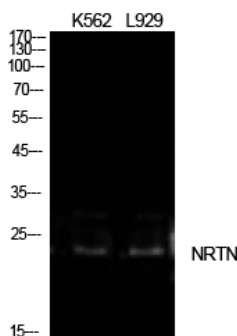
neurturin(NRTN) Homo sapiens This gene encodes a secreted ligand of the TGF-beta (transforming growth factor-beta)

superfamily of proteins. The encoded preproprotein is proteolytically processed to generate the mature protein. This protein signals through the RET receptor tyrosine kinase and a GPI-linked coreceptor, and promotes survival of neuronal populations. A neurturin mutation has been described in a family with Hirschsprung Disease. [provided by RefSeq, Aug 2016],disease:Defects in NRTN are a cause of Hirschsprung disease (HSCR) [MIM:142623]. In association with mutations of RET gene, and possibly with other loci, defects in NRTN are involved in Hirschsprung disease. This genetic disorder of neural crest development is characterized by the absence of intramural ganglion cells in the hindgut, often resulting in intestinal obstruction.,function:Supports the survival of sympathetic neurons in culture. May regulate the development and maintenance of the CNS. Might control the size of non-neuronal cell population such as haemopoietic cells.,similarity:Belongs to the TGF-beta family. GDNF subfamily.,subunit:Homodimer; disulfide-linked.,

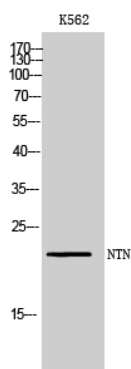
Research Area

Neurology process; Growth and Development; Neurotrophins; Neuroscience; Development

Image Data



Western Blot analysis of K562, L929 cells using NTN Polyclonal Antibody. Antibody was diluted at 1:1000. Secondary antibody was diluted at 1:20000



Western Blot analysis of K562 cells using NTN Polyclonal Antibody diluted at 1 : 1000. Secondary antibody was diluted at 1:20000