
Product Name: NTF2 Rabbit Polyclonal Antibody**Catalog #: APRab14927**

For research use only.

Summary

Description	Rabbit polyclonal Antibody
Host	Rabbit
Application	WB,IHC,ICC/IF,ELISA
Reactivity	Human,Mouse,Rat
Conjugation	Unconjugated
Modification	Unmodified
Isotype	IgG
Clonality	Polyclonal
Form	Liquid
Concentration	1mg/ml
Storage	Aliquot and store at -20°C (valid for 12 months). Avoid freeze/thaw cycles.
Shipping	Ice bags
Buffer	Liquid in PBS containing 50% glycerol, 0.5% protective protein and 0.02% New type preservative N.
Purification	Affinity purification

Application

Dilution Ratio	WB 1:500-1:2000,IHC 1:100-1:300,ICC/IF 1:50-1:200,ELISA 1:10000-1:20000
Molecular Weight	15kDa

Antigen Information

Gene Name	NUTF2
Alternative Names	NUTF2; NTF2; Nuclear transport factor 2; NTF-2; Placental protein 15; PP15
Gene ID	10204.0
SwissProt ID	P61970
Immunogen	The antiserum was produced against synthesized peptide derived from human NUTF2. AA range:67-116

Background

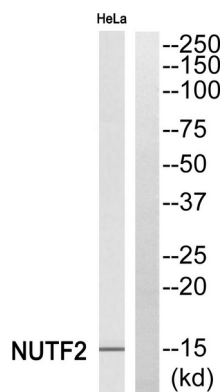
This gene encodes a cytosolic factor that facilitates protein transport into the nucleus. The encoded protein is required for

nuclear import of the small Ras-like GTPase, Ran which is involved in numerous cellular processes. This protein also interacts with the nuclear pore complex glycoprotein p62. [provided by RefSeq, Apr 2016],function:Facilitates protein transport into the nucleus. Interacts with the nucleoporin p62 and with Ran. Acts at a relatively late stage of nuclear protein import, subsequent to the initial docking of nuclear import ligand at the nuclear envelope. Could be part of a multicomponent system of cytosolic factors that assemble at the pore complex during nuclear import.,similarity:Contains 1 NTF2 domain.,subunit:Homodimer.,

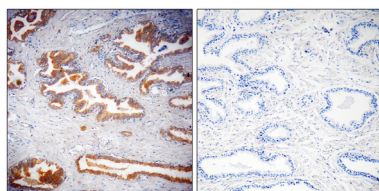
Research Area

Signal Transduction; Protein Trafficking; Nuclear Import / Export

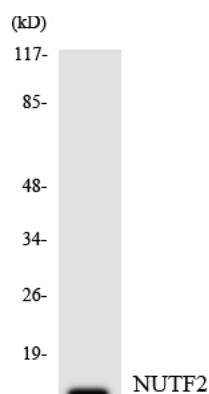
Image Data



Western blot analysis of NUTF2 Antibody. The lane on the right is blocked with the NUTF2 peptide.

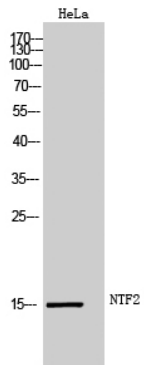


Immunohistochemistry analysis of paraffin-embedded human prostate, using NUTF2 Antibody. The lane on the right is blocked with the NUTF2 peptide.



Western blot analysis of the lysates from HT-29 cells using NUTF2 antibody.

Western Blot analysis of HeLa cells using NTF2 Polyclonal Antibody



Western Blot analysis of HeLa cells using NTF2 Polyclonal Antibody

