
Product Name: NT-4 Rabbit Polyclonal Antibody**Catalog #: APRab14918**

For research use only.

Summary

Description	Rabbit polyclonal Antibody
Host	Rabbit
Application	IHC,ICC/IF,ELISA
Reactivity	Human,Mouse,Rat
Conjugation	Unconjugated
Modification	Unmodified
Isotype	IgG
Clonality	Polyclonal
Form	Liquid
Concentration	1mg/ml
Storage	Aliquot and store at -20°C (valid for 12 months). Avoid freeze/thaw cycles.
Shipping	Ice bags
Buffer	Liquid in PBS containing 50% glycerol, 0.5% protective protein and 0.02% New type preservative N.
Purification	Affinity purification

Application

Dilution Ratio IHC 1:100-1:300,ICC/IF 1:50-1:200,ELISA 1:5000-1:20000

Molecular Weight

Antigen Information

Gene Name	NTF4
Alternative Names	NTF4; NTF5; Neurotrophin-4; NT-4; Neurotrophin-5; NT-5; Neutrophic factor 4
Gene ID	4909.0
SwissProt ID	P34130
Immunogen	The antiserum was produced against synthesized peptide derived from human NT-4. AA range:71-120

Background

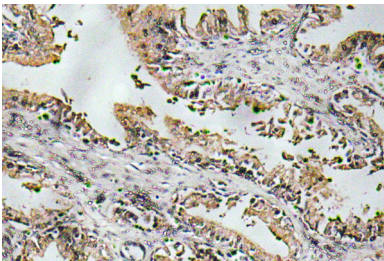
This gene is a member of a family of neurotrophic factors, neurotrophins, that control survival and differentiation of

mammalian neurons. The expression of this gene is ubiquitous and less influenced by environmental signals. While knock-outs of other neurotrophins including nerve growth factor, brain-derived neurotrophic factor, and neurotrophin 3 prove lethal during early postnatal development, NTF5-deficient mice only show minor cellular deficits and develop normally to adulthood. [provided by RefSeq, Jul 2008],function:Target-derived survival factor for peripheral sensory sympathetic neurons.,similarity:Belongs to the NGF-beta family.,tissue specificity:Highest levels in prostate, lower levels in thymus, placenta, and skeletal muscle. Expressed in embryonic and adult tissues.,

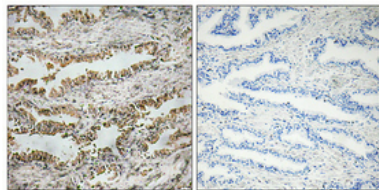
Research Area

MAPK_ERK_Growth;MAPK_G_Protein;Neurotrophin;

Image Data



Immunohistochemistry analysis of NT-4 antibody in paraffin-embedded human prostate carcinoma tissue.



Immunohistochemical analysis of paraffin-embedded Human prostate cancer. Antibody was diluted at 1:100 (4°,overnight) . High-pressure and temperature Tris-EDTA,pH8.0 was used for antigen retrieval. Negative contrl (right) obtained from antibody was pre-absorbed by immunogen peptide.