

---

**Product Name: NT-3 Rabbit Polyclonal Antibody****Catalog #: APRab14917**

For research use only.

**Summary**

<b>Description</b>	Rabbit polyclonal Antibody
<b>Host</b>	Rabbit
<b>Application</b>	IHC,ICC/IF,ELISA
<b>Reactivity</b>	Human,Mouse,Rat
<b>Conjugation</b>	Unconjugated
<b>Modification</b>	Unmodified
<b>Isotype</b>	IgG
<b>Clonality</b>	Polyclonal
<b>Form</b>	Liquid
<b>Concentration</b>	1mg/ml
<b>Storage</b>	Aliquot and store at -20°C (valid for 12 months). Avoid freeze/thaw cycles.
<b>Shipping</b>	Ice bags
<b>Buffer</b>	Liquid in PBS containing 50% glycerol, 0.5% protective protein and 0.02% New type preservative N.
<b>Purification</b>	Affinity purification

**Application**

**Dilution Ratio** IHC 1:50-1:200,ICC/IF 1:50-1:200,ELISA 1:10000-1:20000

**Molecular Weight**

**Antigen Information**

<b>Gene Name</b>	NTF3
<b>Alternative Names</b>	Neurotrophin-3 (NT-3;HDNF;Nerve growth factor 2;NGF-2;Neurotrophic factor)
<b>Gene ID</b>	4908.0
<b>SwissProt ID</b>	P20783
<b>Immunogen</b>	Synthetic peptide from human protein at AA range: 180-230

**Background**

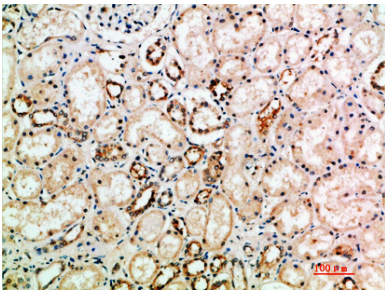
The protein encoded by this gene is a member of the neurotrophin family, that controls survival and differentiation of mammalian neurons. This protein is closely related to both nerve growth factor and brain-derived neurotrophic factor. It may

be involved in the maintenance of the adult nervous system, and may affect development of neurons in the embryo when it is expressed in human placenta. NTF3-deficient mice generated by gene targeting display severe movement defects of the limbs. The mature peptide of this protein is identical in all mammals examined including human, pig, rat and mouse. [provided by RefSeq, Jul 2008],function:Seems to promotes the survival of visceral and proprioceptive sensory neurons.,polymorphism:Variant Glu-76 (frequently reported as Glu-63) was thought to be associated with severe forms of schizophrenia. This does not seem to be the case.,similarity:Belongs to the NGF-beta family.,tissue specificity:Brain and peripheral tissues.,

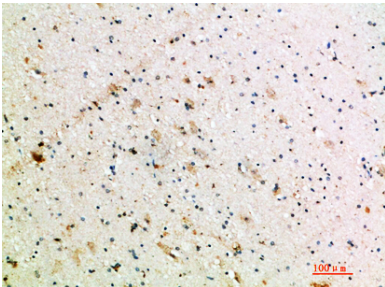
## Research Area

MAPK\_ERK\_Growth;MAPK\_G\_Protein;Neurotrophin;

## Image Data



Immunohistochemical analysis of paraffin-embedded human-kidney, antibody was diluted at 1:200



Immunohistochemical analysis of paraffin-embedded human-brain, antibody was diluted at 1:200