

Product Name: N-Shc Rabbit Polyclonal Antibody**Catalog #: APRab14913**

For research use only.

Summary

Description	Rabbit polyclonal Antibody
Host	Rabbit
Application	IHC, ICC/IF, ELISA
Reactivity	Human, Mouse, Rat
Conjugation	Unconjugated
Modification	Unmodified
Isotype	IgG
Clonality	Polyclonal
Form	Liquid
Concentration	1mg/ml
Storage	Aliquot and store at -20°C (valid for 12 months). Avoid freeze/thaw cycles.
Shipping	Ice bags
Buffer	Liquid in PBS containing 50% glycerol, 0.5% protective protein and 0.02% New type preservative N.
Purification	Affinity purification

Application

Dilution Ratio	IHC 1:100-1:300, ICC/IF 1:50-1:200, ELISA 1:5000-1:20000
Molecular Weight	48kDa

Antigen Information

Gene Name	SHC3
Alternative Names	SHC3; NSHC; SHCC; SHC-transforming protein 3; Neuronal Shc; N-Shc; Protein Rai; SHC-transforming protein C; Src homology 2 domain-containing-transforming protein C3; SH2 domain protein C3
Gene ID	53358.0
SwissProt ID	Q92529
Immunogen	The antiserum was produced against synthesized peptide derived from human SHC3. AA range: 291-340

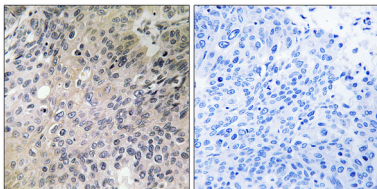
Background

function: Signaling adapter that couples activated growth factor receptors to signaling pathway in neurons. Involved in the signal transduction pathways of neurotrophin-activated Trk receptors in cortical neurons., PTM: Tyrosine phosphorylated., similarity: Contains 1 PID domain., similarity: Contains 1 SH2 domain., subunit: Interacts with the Trk receptors in a phosphotyrosine-dependent manner. Once activated, binds to GRB2. Interacts with activated EGF receptors., tissue specificity: Mainly expressed in brain. Hardly detectable in other tissues, except in pancreas. Highly expressed in the cerebral cortex, frontal and temporal lobes, occipital pole, hippocampus, caudate nucleus and amygdala. Expressed at low level in the cerebellum, medulla and spinal cord., function: Signaling adapter that couples activated growth factor receptors to signaling pathway in neurons. Involved in the signal transduction pathways of neurotrophin-activated Trk receptors in cortical neurons., PTM: Tyrosine phosphorylated., similarity: Contains 1 PID domain., similarity: Contains 1 SH2 domain., subunit: Interacts with the Trk receptors in a phosphotyrosine-dependent manner. Once activated, binds to GRB2. Interacts with activated EGF receptors., tissue specificity: Mainly expressed in brain. Hardly detectable in other tissues, except in pancreas. Highly expressed in the cerebral cortex, frontal and temporal lobes, occipital pole, hippocampus, caudate nucleus and amygdala. Expressed at low level in the cerebellum, medulla and spinal cord.,

Research Area

ErbB_HER; Chemokine; Focal adhesion; Natural killer cell mediated cytotoxicity; Neurotrophin; Insulin_Receptor; Glioma; Chronic myeloid leukemia;

Image Data



Immunohistochemistry analysis of paraffin-embedded human lung carcinoma tissue, using SHC3 Antibody. The picture on the right is blocked with the synthesized peptide.