

## Summary

<b>Production Name</b>	NSE2 Rabbit Polyclonal Antibody
<b>Description</b>	Rabbit Polyclonal Antibody
<b>Host</b>	Rabbit
<b>Application</b>	WB,IHC-P,IF-P,IF-F,ICC/IF,ELISA
<b>Reactivity</b>	Human,Rat,Mouse

## Performance

<b>Conjugation</b>	Unconjugated
<b>Modification</b>	Unmodified
<b>Isotype</b>	IgG
<b>Clonality</b>	Polyclonal
<b>Form</b>	Liquid
<b>Storage</b>	Store at 4°C short term. Aliquot and store at -20°C long term. Avoid freeze/thaw cycles.
<b>Buffer</b>	Liquid in PBS containing 50% glycerol, 0.5% protective protein and 0.02% New type preservative N.
<b>Purification</b>	Affinity purification

## Immunogen

<b>Gene Name</b>	FAM84B
<b>Alternative Names</b>	FAM84B; BCMP101; NSE2; Protein FAM84B; Breast cancer membrane protein 101; Protein NSE2
<b>Gene ID</b>	157638.0
<b>SwissProt ID</b>	Q96KN1.The antiserum was produced against synthesized peptide derived from human FAM84B. AA range:11-60

## Application

<b>Dilution Ratio</b>	WB 1:500-1:2000, IHC-P 1:100-1:300, ELISA 1:10000, IF-P/IF-F/ICC/IF 1:50-200
<b>Molecular Weight</b>	38kDa

**Product Name: NSE2 Rabbit Polyclonal Antibody**  
**Catalog #: APRab14911**



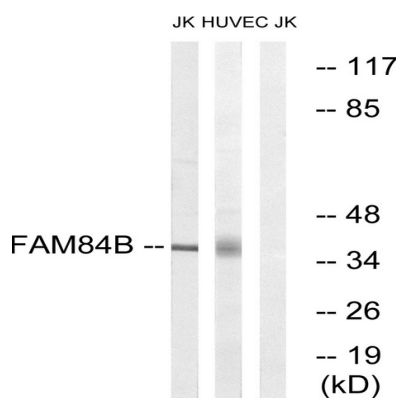
## Background

similarity:Belongs to the FAM84 family.,tissue specificity:Expressed in esophageal squamous cell

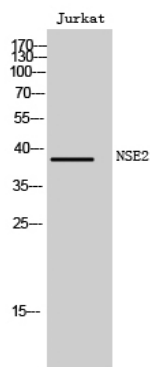
carcinomas.,similarity:Belongs to the FAM84 family.,tissue specificity:Expressed in esophageal squamous cell carcinomas.,

## Research Area

## Image Data



Western blot analysis of lysates from Jurkat and HUVEC cells, using FAM84B Antibody. The lane on the right is blocked with the synthesized peptide.



Western Blot analysis of Jurkat cells using NSE2 Polyclonal Antibody

## Note

For research use only.