
Product Name: NRF-1 Rabbit Polyclonal Antibody**Catalog #: APRab14891**

For research use only.

Summary

Description	Rabbit polyclonal Antibody
Host	Rabbit
Application	WB,ELISA
Reactivity	Human,Mouse,Rat,Bovine
Conjugation	Unconjugated
Modification	Unmodified
Isotype	IgG
Clonality	Polyclonal
Form	Liquid
Concentration	1mg/ml
Storage	Aliquot and store at -20°C (valid for 12 months). Avoid freeze/thaw cycles.
Shipping	Ice bags
Buffer	Liquid in PBS containing 50% glycerol, 0.5% protective protein and 0.02% New type preservative N.
Purification	Affinity purification

Application

Dilution Ratio	WB 1:500-1:2000,ELISA 1:5000-1:10000
Molecular Weight	54kDa

Antigen Information

Gene Name	NRF1
Alternative Names	NRF1; Nuclear respiratory factor 1; NRF-1; Alpha palindromic-binding protein; Alpha-pal
Gene ID	4899.0
SwissProt ID	Q16656
Immunogen	The antiserum was produced against synthesized peptide derived from human NRF1. AA range:221-270

Background

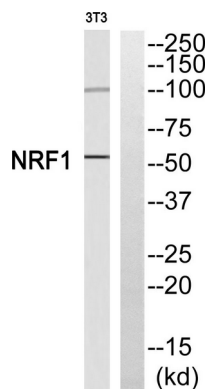
This gene encodes a protein that homodimerizes and functions as a transcription factor which activates the expression of some

key metabolic genes regulating cellular growth and nuclear genes required for respiration, heme biosynthesis, and mitochondrial DNA transcription and replication. The protein has also been associated with the regulation of neurite outgrowth. Alternative splicing results in multiple transcript variants. Confusion has occurred in bibliographic databases due to the shared symbol of NRF1 for this gene and for "nuclear factor (erythroid-derived 2)-like 1" which has an official symbol of NFE2L1. [provided by RefSeq, May 2014],function:Transcription factor that activates the expression of the EIF2S1 (EIF2-alpha) gene. Links the transcriptional modulation of key metabolic genes to cellular growth and development. Implicated in the control of nuclear genes required for respiration, heme biosynthesis, and mitochondrial DNA transcription and replication.,PTM:Phosphorylation enhances DNA binding.,similarity:Belongs to the NRF1/Ewg family.,subunit:Homodimer. Binds DNA as a dimer. Interacts with PPRC1.,tissue specificity:Ubiquitously expressed with strongest expression in skeletal muscle.,

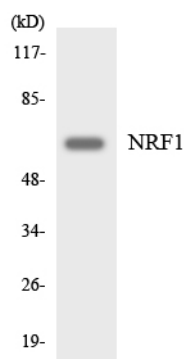
Research Area

Huntington's disease;

Image Data



Western blot analysis of NRF1 Antibody. The lane on the right is blocked with the NRF1 peptide.



Western blot analysis of the lysates from HeLa cells using NRF1 antibody.

Western Blot analysis of 3T3 cells using NRF-1 Polyclonal Antibody.

