

Product Name: NPY Rabbit Polyclonal Antibody**Catalog #: APRab14858**

For research use only.

Summary

Description	Rabbit polyclonal Antibody
Host	Rabbit
Application	WB,IHC,ICC/IF,ELISA
Reactivity	Human,Mouse,Rat
Conjugation	Unconjugated
Modification	Unmodified
Isotype	IgG
Clonality	Polyclonal
Form	Liquid
Concentration	1mg/ml
Storage	Aliquot and store at -20°C (valid for 12 months). Avoid freeze/thaw cycles.
Shipping	Ice bags
Buffer	Liquid in PBS containing 50% glycerol, 0.5% protective protein and 0.02% New type preservative N.
Purification	Affinity purification

Application

Dilution Ratio	WB 1:500-1:2000,IHC 1:100-1:500,ICC/IF 1:50-1:200,ELISA 1:5000-1:20000
Molecular Weight	

Antigen Information

Gene Name	NPY
Alternative Names	NPY; Pro-neuropeptide Y
Gene ID	4852.0
SwissProt ID	P01303
Immunogen	The antiserum was produced against synthesized peptide derived from human NPY. AA range:45-94

Background

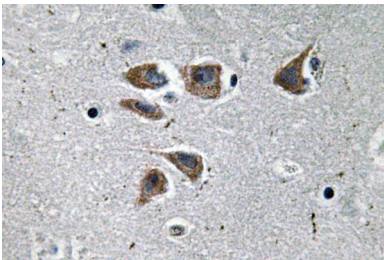
This gene encodes a neuropeptide that is widely expressed in the central nervous system and influences many physiological

processes, including cortical excitability, stress response, food intake, circadian rhythms, and cardiovascular function. The neuropeptide functions through G protein-coupled receptors to inhibit adenylyl cyclase, activate mitogen-activated protein kinase (MAPK), regulate intracellular calcium levels, and activate potassium channels. A polymorphism in this gene resulting in a change of leucine 7 to proline in the signal peptide is associated with elevated cholesterol levels, higher alcohol consumption, and may be a risk factor for various metabolic and cardiovascular diseases. The protein also exhibits antimicrobial activity against bacteria and fungi. [provided by RefSeq, Oct 2014],function:NPY is implicated in the control of feeding and in secretion of gonadotrophin-release hormone.,online information:Neuropeptide Y entry,similarity:Belongs to the NPY family.,tissue specificity:One of the most abundant peptides in the nervous system. Also found in some chromaffin cells of the adrenal medulla.,

Research Area

Adipocytokine;

Image Data



Immunohistochemistry analysis of NPY antibody in paraffin-embedded human brain tissue.