

Product Name: NPDC-1 Rabbit Polyclonal Antibody**Catalog #: APRab14834**

For research use only.

Summary

Description	Rabbit polyclonal Antibody
Host	Rabbit
Application	WB,ELISA
Reactivity	Human,Mouse,Rat
Conjugation	Unconjugated
Modification	Unmodified
Isotype	IgG
Clonality	Polyclonal
Form	Liquid
Concentration	1mg/ml
Storage	Aliquot and store at -20°C (valid for 12 months). Avoid freeze/thaw cycles.
Shipping	Ice bags
Buffer	Liquid in PBS containing 50% glycerol, 0.5% protective protein and 0.02% New type preservative N.
Purification	Affinity purification

Application

Dilution Ratio	WB 1:500-1:2000,ELISA 1:10000-1:20000
Molecular Weight	35kDa

Antigen Information

Gene Name	NPDC1
Alternative Names	NPDC1; Neural proliferation differentiation and control protein 1; NPDC-1
Gene ID	56654.0
SwissProt ID	Q9NQX5
Immunogen	The antiserum was produced against synthesized peptide derived from human NPDC1. AA range:189-238

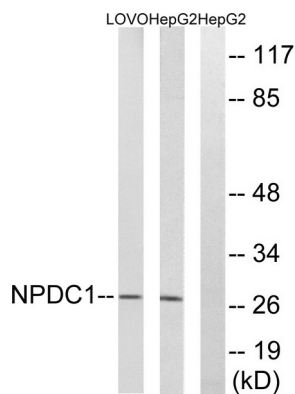
Background

function:Suppresses oncogenic transformation in neural and non-neural cells and down-regulates neural cell proliferation.

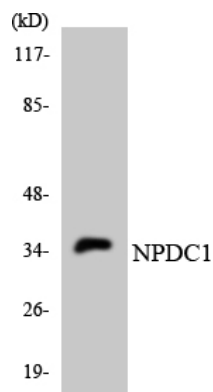
Might be involved in transcriptional regulation.,similarity:Belongs to the NPDC1/cab-1 family.,tissue specificity:Strongly expressed in adult brain; especially in hippocampus, frontal lobe and temporal lobe.,function:Suppresses oncogenic transformation in neural and non-neural cells and down-regulates neural cell proliferation. Might be involved in transcriptional regulation.,similarity:Belongs to the NPDC1/cab-1 family.,tissue specificity:Strongly expressed in adult brain; especially in hippocampus, frontal lobe and temporal lobe.,

Research Area

Image Data



Western blot analysis of lysates from HepG2 and LOVO cells, using NPDC1 Antibody. The lane on the right is blocked with the synthesized peptide.



Western blot analysis of the lysates from K562 cells using NPDC1 antibody.



Western Blot analysis of various cells using NPDC-1 Polyclonal Antibody