

Product Name: NP220 Rabbit Polyclonal Antibody**Catalog #: APRab14823**

For research use only.

Summary

Description	Rabbit polyclonal Antibody
Host	Rabbit
Application	WB,IHC,ICC/IF,ELISA
Reactivity	Human,Rat,Mouse
Conjugation	Unconjugated
Modification	Unmodified
Isotype	IgG
Clonality	Polyclonal
Form	Liquid
Concentration	1mg/ml
Storage	Aliquot and store at -20°C (valid for 12 months). Avoid freeze/thaw cycles.
Shipping	Ice bags
Buffer	Liquid in PBS containing 50% glycerol, 0.5% protective protein and 0.02% New type preservative N.
Purification	Affinity purification

Application

Dilution Ratio	WB 1:500-1:2000,IHC 1:100-1:300,ICC/IF 1:50-1:200,ELISA 1:10000-1:20000
Molecular Weight	220kDa

Antigen Information

Gene Name	ZNF638 ZNF638; NP220; ZFML; Zinc finger protein 638; Cutaneous T-cell lymphoma-associated
Alternative Names	antigen se33-1; CTCL-associated antigen se33-1; Nuclear protein 220; Zinc finger matrin-like protein
Gene ID	27332.0
SwissProt ID	Q14966
Immunogen	The antiserum was produced against synthesized peptide derived from human ZNF638. AA range:1271-1320

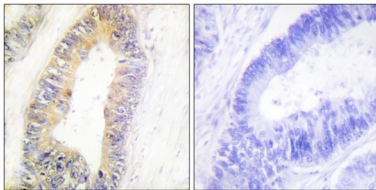
Background

zinc finger protein 638(ZNF638) Homo sapiens The protein encoded by this gene is a nucleoplasmic protein. It binds cytidine-rich sequences in double-stranded DNA. This protein has three types of domains: MH1, MH2 (repeated three times) and MH3. It is associated with packaging, transferring, or processing transcripts. Multiple alternatively spliced transcript variants have been found for this gene, but the biological validity of some variants has not been determined. [provided by RefSeq, Jul 2008],alternative products:Additional isoforms seem to exist,disease:Isoform 5 is a tumor-associated antigen found in several cutaneous T-cell lymphoma (CTCL), and in particular in mycosis fungoides patients and in Sezary syndrome patients.,function:Binds to cytidine clusters in double-stranded DNA.,PTM:Phosphorylated upon DNA damage, probably by ATM or ATR.,sequence caution:Contaminating sequence. Potential poly-A sequence.,similarity:Contains 1 matrin-type zinc finger.,similarity:Contains 2 RRM (RNA recognition motif) domains.,subunit:Interacts with FHL2.,

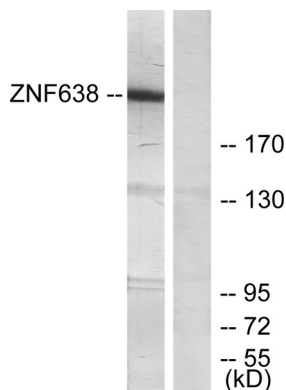
Research Area

DNA / RNA; RNA Processing; Epigenetics and Nuclear Signaling; Chromatin Binding Proteins; DNA / RNA binding; Transcription; Domain Families; Zinc Finger

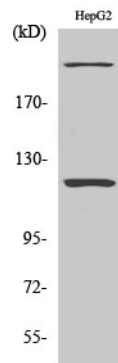
Image Data



Immunohistochemistry analysis of paraffin-embedded human colon carcinoma tissue, using ZNF638 Antibody. The picture on the right is blocked with the synthesized peptide.



Western blot analysis of lysates from HepG2 cells, treated with serum 20% 15', using ZNF638 Antibody. The lane on the right is blocked with the synthesized peptide.



Western Blot analysis of various cells using NP220 Polyclonal Antibody