

Product Name: NOM1 Rabbit Polyclonal Antibody**Catalog #: APRab14793**

For research use only.

Summary

Description	Rabbit polyclonal Antibody
Host	Rabbit
Application	IHC, ICC/IF, ELISA
Reactivity	Human, Mouse
Conjugation	Unconjugated
Modification	Unmodified
Isotype	IgG
Clonality	Polyclonal
Form	Liquid
Concentration	1mg/ml
Storage	Aliquot and store at -20°C (valid for 12 months). Avoid freeze/thaw cycles.
Shipping	Ice bags
Buffer	Liquid in PBS containing 50% glycerol, 0.5% protective protein and 0.02% New type preservative N.
Purification	Affinity purification

Application

Dilution Ratio IHC 1:100-1:300, ICC/IF 1:50-1:200, ELISA 1:20000-1:40000

Molecular Weight

Antigen Information

Gene Name	NOM1
Alternative Names	NOM1; C7orf3; Nucleolar MIF4G domain-containing protein 1; SGD1 homolog
Gene ID	64434.0
SwissProt ID	Q5C9Z4
Immunogen	The antiserum was produced against synthesized peptide derived from human NOM1. AA range:661-710

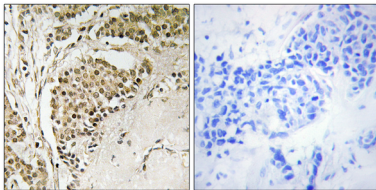
Background

Proteins that contain MIF4G (middle of eIF4G (MIM 600495)) and/or MA3 domains, such as NOM1, function in protein

translation. These domains include binding sites for members of the EIF4A family of ATP-dependent DEAD box RNA helicases (see EIF4A1; MIM 602641) (Simmons et al., 2005 [PubMed 15715967]).[supplied by OMIM, Mar 2008],similarity:Belongs to the CWC22 family.,similarity:Contains 1 MI domain.,similarity:Contains 1 MIF4G domain.,subunit:May interact with EIF4A1, EIF4A2 and EIF4A3.,tissue specificity:Expressed in heart and skeletal muscle.,

Research Area

Image Data



Immunohistochemistry analysis of paraffin-embedded human breast carcinoma tissue, using NOM1 Antibody. The picture on the right is blocked with the synthesized peptide.