

---

**Product Name: NOL10 Rabbit Polyclonal Antibody****Catalog #: APRab14786**

For research use only.

**Summary**

<b>Description</b>	Rabbit polyclonal Antibody
<b>Host</b>	Rabbit
<b>Application</b>	WB,IHC,ICC/IF,ELISA
<b>Reactivity</b>	Human,Rat,Mouse
<b>Conjugation</b>	Unconjugated
<b>Modification</b>	Unmodified
<b>Isotype</b>	IgG
<b>Clonality</b>	Polyclonal
<b>Form</b>	Liquid
<b>Concentration</b>	1mg/ml
<b>Storage</b>	Aliquot and store at -20°C (valid for 12 months). Avoid freeze/thaw cycles.
<b>Shipping</b>	Ice bags
<b>Buffer</b>	Liquid in PBS containing 50% glycerol, 0.5% protective protein and 0.02% New type preservative N.
<b>Purification</b>	Affinity purification

**Application**

<b>Dilution Ratio</b>	WB 1:500-1:2000,IHC 1:100-1:300,ICC/IF 1:50-1:200,ELISA 1:20000-1:40000
<b>Molecular Weight</b>	80kDa

**Antigen Information**

<b>Gene Name</b>	NOL10
<b>Alternative Names</b>	NOL10; Nucleolar protein 10
<b>Gene ID</b>	79954.0
<b>SwissProt ID</b>	Q9BSC4
<b>Immunogen</b>	The antiserum was produced against synthesized peptide derived from human NOL10. AA range:639-688

**Background**

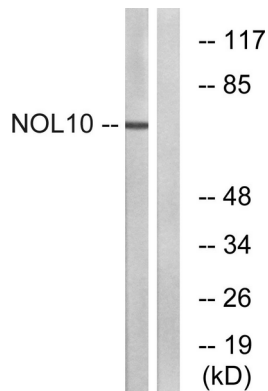
similarity:Belongs to the WD repeat NOL10/ENP2 family.,similarity:Contains 5 WD repeats.,similarity:Belongs to the WD repeat

NOL10/ENP2 family, similarity: Contains 5 WD repeats,

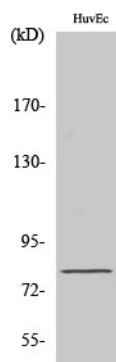
## Research Area

Tags & Cell Markers; Subcellular Markers; Nucleus; Nucleolus

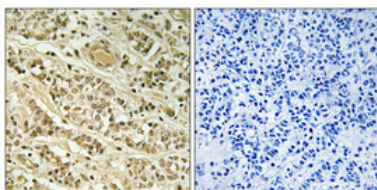
## Image Data



Western blot analysis of lysates from HUVEC cells, using NOL10 Antibody. The lane on the right is blocked with the synthesized peptide.



Western Blot analysis of various cells using NOL10 Polyclonal Antibody.



Immunohistochemical analysis of paraffin-embedded Human breast cancer. Antibody was diluted at 1:100 (4°, overnight). High-pressure and temperature Tris-EDTA, pH 8.0 was used for antigen retrieval. Negative control (right) obtained from antibody was pre-absorbed by immunogen peptide.