
Product Name: NNT-1 Rabbit Polyclonal Antibody**Catalog #: APRab14770**

For research use only.

Summary

Description	Rabbit polyclonal Antibody
Host	Rabbit
Application	IHC,ICC/IF,ELISA
Reactivity	Human,Mouse,Rat
Conjugation	Unconjugated
Modification	Unmodified
Isotype	IgG
Clonality	Polyclonal
Form	Liquid
Concentration	1mg/ml
Storage	Aliquot and store at -20°C (valid for 12 months). Avoid freeze/thaw cycles.
Shipping	Ice bags
Buffer	Liquid in PBS containing 50% glycerol, 0.5% protective protein and 0.02% New type preservative N.
Purification	Affinity purification

Application

Dilution Ratio IHC 1:50-1:200,ICC/IF 1:50-1:200,ELISA 1:10000-1:20000

Molecular Weight

Antigen Information

Gene Name	CLCF1 BSF3 CLC NNT1
Alternative Names	Cardiotrophin-like cytokine factor 1 (B-cell-stimulating factor 3;BSF-3;Novel neurotrophin-1;NNT-1)
Gene ID	23529.0
SwissProt ID	Q9UBD9
Immunogen	Synthetic peptide from human protein at AA range: 171-220

Background

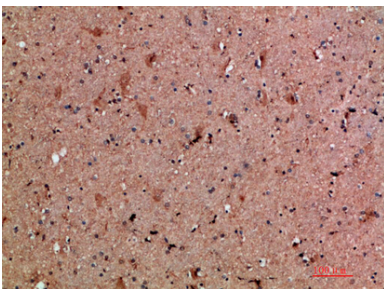
This gene is a member of the glycoprotein (gp)130 cytokine family and encodes cardiotrophin-like cytokine factor 1 (CLCF1).

CLCF1 forms a heterodimer complex with cytokine receptor-like factor 1 (CRLF1). This dimer competes with ciliary neurotrophic factor (CNTF) for binding to the ciliary neurotrophic factor receptor (CNTFR) complex, and activates the Jak-STAT signaling cascade. CLCF1 can be actively secreted from cells by forming a complex with soluble type I CRLF1 or soluble CNTFR. CLCF1 is a potent neurotrophic factor, B-cell stimulatory agent and neuroendocrine modulator of pituitary corticotroph function. Defects in CLCF1 cause cold-induced sweating syndrome 2 (CISS2). This syndrome is characterized by a profuse sweating after exposure to cold as well as congenital physical abnormalities of the head and spine. Alternative splicing results in multiple transcript variants encoding disease: Defects in CLCF1 are the cause of cold-induced sweating syndrome 2 (CISS2) [MIM:610313]. Cold-induced sweating syndrome (CISS) is an autosomal recessive disorder characterized by profuse sweating induced by cool surroundings (temperatures of 7 to 18 degrees Celsius). Additional abnormalities include a high-arched palate, nasal voice, depressed nasal bridge, inability to fully extend the elbows and kyphoscoliosis. function: Cytokine with B-cell stimulating capability. Binds to and activates the ILST/gp130 receptor. similarity: Belongs to the IL-6 superfamily. tissue specificity: Expressed predominantly in lymph nodes, spleen, peripheral blood lymphocytes, bone marrow, and fetal liver.

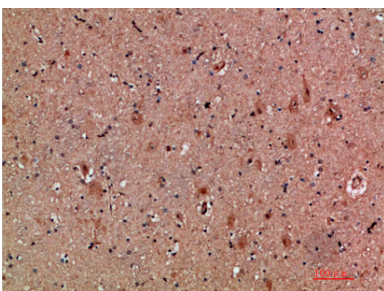
Research Area

Cytokine-cytokine receptor interaction; Jak_STAT;

Image Data



Immunohistochemical analysis of paraffin-embedded human brain, antibody was diluted at 1:200



Immunohistochemical analysis of paraffin-embedded human brain, antibody was diluted at 1:200