

Product Name: NMUR2 Rabbit Polyclonal Antibody**Catalog #: APRab14767**

For research use only.

Summary

Description	Rabbit polyclonal Antibody
Host	Rabbit
Application	WB,ELISA
Reactivity	Human,Rat,Mouse
Conjugation	Unconjugated
Modification	Unmodified
Isotype	IgG
Clonality	Polyclonal
Form	Liquid
Concentration	1mg/ml
Storage	Aliquot and store at -20°C (valid for 12 months). Avoid freeze/thaw cycles.
Shipping	Ice bags
Buffer	Liquid in PBS containing 50% glycerol, 0.5% protective protein and 0.02% New type preservative N.
Purification	Affinity purification

Application

Dilution Ratio	WB 1:500-1:2000,ELISA 1:10000-1:20000
Molecular Weight	46kDa

Antigen Information

Gene Name	NMUR2
Alternative Names	Neuromedin-U receptor 2 (NMU-R2) (G-protein coupled receptor FM-4) (G-protein coupled receptor TGR-1)
Gene ID	56923.0
SwissProt ID	Q9GZQ4
Immunogen	Synthesized peptide derived from human NMUR2. at AA range: 1-50

Background

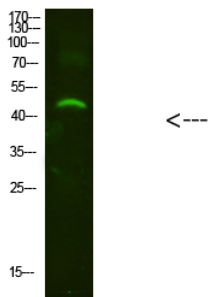
This gene encodes a protein from the G-protein coupled receptor 1 family. This protein is a receptor for neuromedin U, which is

a neuropeptide that is widely distributed in the gut and central nervous system. This receptor plays an important role in the regulation of food intake and body weight. [provided by RefSeq, Jul 2008],caution:It is uncertain whether Met-1 or Met-4 is the initiator.,function:Receptor for the neuromedin-U and neuromedin-S neuropeptides.,similarity:Belongs to the G-protein coupled receptor 1 family.,tissue specificity:Predominantly expressed in the CNS, particularly in the medulla oblongata, pontine reticular formation, spinal cord, and thalamus. High level in testis whereas lower levels are present in a variety of peripheral tissues including the gastrointestinal tract, genitourinary tract, liver, pancreas, adrenal gland, thyroid gland, lung, trachea, spleen and thymus.,

Research Area

Neuroactive ligand-receptor interaction;

Image Data



Western Blot analysis of mouse-brain cells using NMUR2 Rabbit Polyclonal Antibody diluted at 1:2000 (4°C overnight). Secondary antibody: Goat Anti-rabbit IgG IRDye 800 (diluted at 1:5000, 25°C, 1 hour)