

Product Name: NMB Rabbit Polyclonal Antibody**Catalog #: APRab14753**

For research use only.

Summary

Description	Rabbit polyclonal Antibody
Host	Rabbit
Application	WB,ELISA
Reactivity	Human,Mouse
Conjugation	Unconjugated
Modification	Unmodified
Isotype	IgG
Clonality	Polyclonal
Form	Liquid
Concentration	1mg/ml
Storage	Aliquot and store at -20°C (valid for 12 months). Avoid freeze/thaw cycles.
Shipping	Ice bags
Buffer	Liquid in PBS containing 50% glycerol, and 0.02% New type preservative N.
Purification	Affinity purification

Application

Dilution Ratio	WB 1:500-1:2000,ELISA 1:5000-1:20000
Molecular Weight	13kDa

Antigen Information

Gene Name	NMB
Alternative Names	
Gene ID	4828.0
SwissProt ID	P08949
Immunogen	Synthesized peptide derived from human protein . at AA range: 20-100

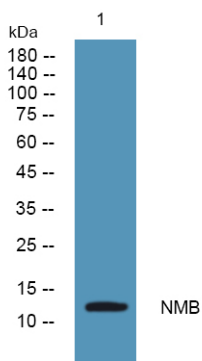
Background

This gene encodes a member of the bombesin-like family of neuropeptides, which negatively regulate eating behavior. The encoded protein may regulate colonic smooth muscle contraction through binding to its cognate receptor, the neuromedin B receptor (NMBR). Polymorphisms of this gene may be associated with hunger, weight gain and obesity. Alternative splicing

results in multiple transcript variants. [provided by RefSeq, Jul 2015],function:Stimulates smooth muscle contraction in a manner similar to that of bombesin.,similarity:Belongs to the bombesin/neuromedin-B/ranatensin family.,

Research Area

Image Data



Western blot analysis of lysates from U2OS cells, NMB Rabbit Polyclonal Antibody was diluted at 1:1000, 4°over night