
Product Name: NLE1 Rabbit Polyclonal Antibody**Catalog #: APRab14740**

For research use only.

Summary

Description	Rabbit polyclonal Antibody
Host	Rabbit
Application	WB,IHC,ICC/IF,ELISA
Reactivity	Human,Monkey
Conjugation	Unconjugated
Modification	Unmodified
Isotype	IgG
Clonality	Polyclonal
Form	Liquid
Concentration	1mg/ml
Storage	Aliquot and store at -20°C (valid for 12 months). Avoid freeze/thaw cycles.
Shipping	Ice bags
Buffer	Liquid in PBS containing 50% glycerol, 0.5% protective protein and 0.02% New type preservative N.
Purification	Affinity purification

Application

Dilution Ratio	WB 1:500-1:2000,IHC 1:100-1:300,ICC/IF 1:50-1:200,ELISA 1:20000-1:40000
Molecular Weight	48kDa

Antigen Information

Gene Name	NLE1
Alternative Names	NLE1; HUSSY-07; Notchless protein homolog 1
Gene ID	54475.0
SwissProt ID	Q9NVX2
Immunogen	The antiserum was produced against synthesized peptide derived from human NLE1. AA range:301-350

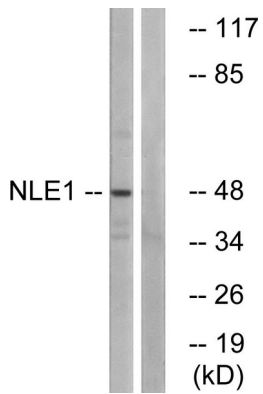
Background

similarity:Contains 8 WD repeats.,similarity:Contains 8 WD repeats.,

Research Area

Stem Cells; Signaling Pathways; Notch; Nuclear

Image Data



Western blot analysis of lysates from COS cells, using NLE1 Antibody. The lane on the right is blocked with the synthesized peptide.