
Product Name: NKX62 Rabbit Polyclonal Antibody**Catalog #: APRab14739**

For research use only.

Summary

Description	Rabbit polyclonal Antibody
Host	Rabbit
Application	WB,ELISA
Reactivity	Human,Rat,Mouse
Conjugation	Unconjugated
Modification	Unmodified
Isotype	IgG
Clonality	Polyclonal
Form	Liquid
Concentration	1mg/ml
Storage	Aliquot and store at -20°C (valid for 12 months). Avoid freeze/thaw cycles.
Shipping	Ice bags
Buffer	Liquid in PBS containing 50% glycerol, and 0.02% New type preservative N.
Purification	Affinity purification

Application

Dilution Ratio	WB 1:500-1:2000,ELISA 1:5000-1:20000
Molecular Weight	30kDa

Antigen Information

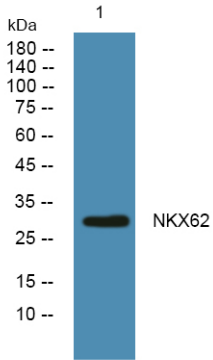
Gene Name	NKX6-2 GTX NKX6B
Alternative Names	
Gene ID	84504.0
SwissProt ID	Q9C056
Immunogen	Synthesized peptide derived from part region of human protein

Background

similarity:Contains 1 homeobox DNA-binding domain.,tissue specificity:Highest expression in brain.,similarity:Contains 1 homeobox DNA-binding domain.,tissue specificity:Highest expression in brain.,

Research Area

Image Data



Western blot analysis of lysates from K562 cells, NKX62 Rabbit Polyclonal Antibody was diluted at 1:1000, 4° over night