
Product Name: Nkx-6.3 Rabbit Polyclonal Antibody**Catalog #: APRab14738**

For research use only.

Summary

Description	Rabbit polyclonal Antibody
Host	Rabbit
Application	WB,ICC/IF,ELISA
Reactivity	Human,Mouse,Monkey
Conjugation	Unconjugated
Modification	Unmodified
Isotype	IgG
Clonality	Polyclonal
Form	Liquid
Concentration	1mg/ml
Storage	Aliquot and store at -20°C (valid for 12 months). Avoid freeze/thaw cycles.
Shipping	Ice bags
Buffer	Liquid in PBS containing 50% glycerol, 0.5% protective protein and 0.02% New type preservative N.
Purification	Affinity purification

Application

Dilution Ratio	WB 1:500-1:2000,ICC/IF 1:200-1:1000,ELISA 1:5000-1:20000
Molecular Weight	34kDa

Antigen Information

Gene Name	NKX6-3
Alternative Names	NKX6-3; Homeobox protein Nkx-6.3
Gene ID	157848.0
SwissProt ID	A6NJ46
Immunogen	The antiserum was produced against synthesized peptide derived from human NKX6.3. AA range:161-210

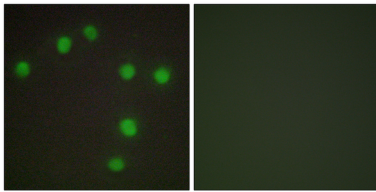
Background

The NKX family of homeodomain proteins controls numerous developmental processes. Members of the NKX6 subfamily,

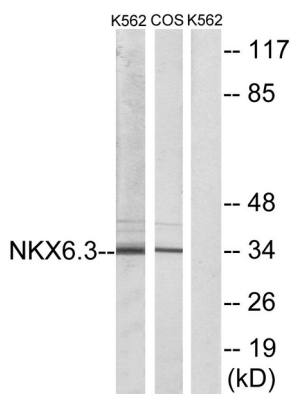
including NKX6-3, are involved in development of the central nervous system (CNS), gastrointestinal tract, and pancreas (Alanentalo et al., 2006 [PubMed 16326147]).[supplied by OMIM, Mar 2008],function:Putative transcription factor, which may be involved in patterning of central nervous system and pancreas.,similarity:Contains 1 homeobox DNA-binding domain.,

Research Area

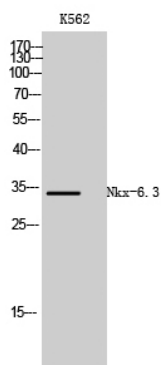
Image Data



Immunofluorescence analysis of HUVEC cells, using NKX6.3 Antibody. The picture on the right is blocked with the synthesized peptide.



Western blot analysis of lysates from K562 and COS7 cells, using NKX6.3 Antibody. The lane on the right is blocked with the synthesized peptide.



Western Blot analysis of K562 cells using Nkx-6.3 Polyclonal Antibody.