

Product Name: Nkx-6.1 Rabbit Polyclonal Antibody**Catalog #: APRab14737**

For research use only.

Summary

Description	Rabbit polyclonal Antibody
Host	Rabbit
Application	WB,ELISA
Reactivity	Human,Mouse,Rat
Conjugation	Unconjugated
Modification	Unmodified
Isotype	IgG
Clonality	Polyclonal
Form	Liquid
Concentration	1mg/ml
Storage	Aliquot and store at -20°C (valid for 12 months). Avoid freeze/thaw cycles.
Shipping	Ice bags
Buffer	Liquid in PBS containing 50% glycerol, 0.5% protective protein and 0.02% New type preservative N.
Purification	Affinity purification

Application

Dilution Ratio WB 1:500-1:2000,ELISA 1:20000-1:40000

Molecular Weight

Antigen Information

Gene Name	NKX6-1
Alternative Names	NKX6-1; NKX6A; Homeobox protein Nkx-6.1; Homeobox protein NK-6 homolog A
Gene ID	4825.0
SwissProt ID	P78426
Immunogen	Synthesized peptide derived from Nkx-6.1 . at AA range: 180-260

Background

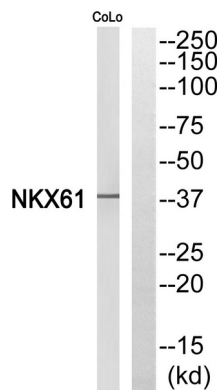
In the pancreas, NKX6.1 is required for the development of beta cells and is a potent bifunctional transcription regulator that binds to AT-rich sequences within the promoter region of target genes lype et al. (2004) [PubMed 15056733].[supplied by

OMIM, Mar 2008],function:May be important for control of islet development and/or regulation of insulin biosynthesis.,similarity:Contains 1 homeobox DNA-binding domain.,tissue specificity:Pancreatic beta cells.,

Research Area

Maturity onset diabetes of the young;

Image Data



Western blot analysis of NKX61 Antibody. The lane on the right is blocked with the NKX61 peptide.