

**Product Name: Nkx-2.6 Rabbit Polyclonal Antibody****Catalog #: APRab14731**

For research use only.

**Summary**

<b>Description</b>	Rabbit polyclonal Antibody
<b>Host</b>	Rabbit
<b>Application</b>	WB,ELISA
<b>Reactivity</b>	Human,Rat,Mouse
<b>Conjugation</b>	Unconjugated
<b>Modification</b>	Unmodified
<b>Isotype</b>	IgG
<b>Clonality</b>	Polyclonal
<b>Form</b>	Liquid
<b>Concentration</b>	1mg/ml
<b>Storage</b>	Aliquot and store at -20°C (valid for 12 months). Avoid freeze/thaw cycles.
<b>Shipping</b>	Ice bags
<b>Buffer</b>	Liquid in PBS containing 50% glycerol, 0.5% protective protein and 0.02% New type preservative N.
<b>Purification</b>	Affinity purification

**Application**

<b>Dilution Ratio</b>	WB 1:500-1:2000,ELISA 1:20000-1:40000
<b>Molecular Weight</b>	28kDa

**Antigen Information**

<b>Gene Name</b>	NKX2-6
<b>Alternative Names</b>	NKX2-6; NKX2F; Homeobox protein Nkx-2.6; Homeobox protein NK-2 homolog F
<b>Gene ID</b>	18092.0
<b>SwissProt ID</b>	A6NCS4
<b>Immunogen</b>	The antiserum was produced against synthesized peptide derived from human NKX26. AA range:91-140

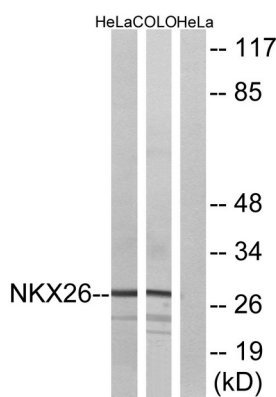
**Background**

This gene encodes a homeobox-containing protein that belongs to the NK-2 homeobox family. This protein is a vertebrate

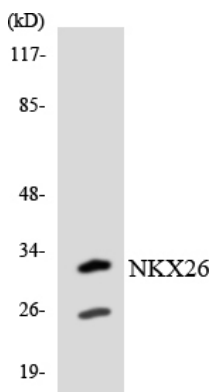
homolog of *Drosophila* homeobox-containing protein called 'tinman', which has been shown to be essential for development of the heart-like dorsal vessel. In conjunction with related gene, NKX2-5, this gene may play a role in both pharyngeal and cardiac embryonic development. Mutations in this gene are associated with persistent truncus arteriosus.[provided by RefSeq, Aug 2011],

## Research Area

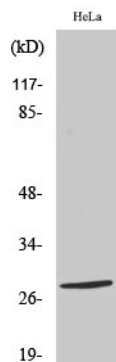
## Image Data



Western blot analysis of lysates from HeLa and COLO cells, using NKX26 Antibody. The lane on the right is blocked with the synthesized peptide.



Western blot analysis of the lysates from Jurkat cells using NKX26 antibody.



Western Blot analysis of various cells using Nkx-2.6 Polyclonal Antibody diluted at 1 : 500