

---

**Product Name: NKIAMRE Rabbit Polyclonal Antibody****Catalog #: APRab14722**

For research use only.

**Summary**

<b>Description</b>	Rabbit polyclonal Antibody
<b>Host</b>	Rabbit
<b>Application</b>	WB,IHC,ICC/IF,ELISA
<b>Reactivity</b>	Human,Rat,Mouse
<b>Conjugation</b>	Unconjugated
<b>Modification</b>	Unmodified
<b>Isotype</b>	IgG
<b>Clonality</b>	Polyclonal
<b>Form</b>	Liquid
<b>Concentration</b>	1mg/ml
<b>Storage</b>	Aliquot and store at -20°C (valid for 12 months). Avoid freeze/thaw cycles.
<b>Shipping</b>	Ice bags
<b>Buffer</b>	Liquid in PBS containing 50% glycerol, 0.5% protective protein and 0.02% New type preservative N.
<b>Purification</b>	Affinity purification

**Application**

<b>Dilution Ratio</b>	WB 1:500-1:2000,IHC 1:100-1:300,ICC/IF 1:50-1:200,ELISA 1:5000-1:10000
<b>Molecular Weight</b>	67kDa

**Antigen Information**

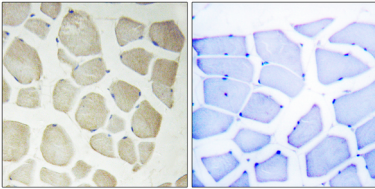
<b>Gene Name</b>	CDKL3
<b>Alternative Names</b>	CDKL3; NKIAMRE; Cyclin-dependent kinase-like 3; Serine/threonine-protein kinase NKIAMRE
<b>Gene ID</b>	51265.0
<b>SwissProt ID</b>	Q8IVW4
<b>Immunogen</b>	The antiserum was produced against synthesized peptide derived from human CDKL3. AA range:291-340

**Background**

The protein encoded by this gene is a member of cyclin-dependent protein kinase (CDK) family. CDK family members are highly similar to the gene products of *Saccharomyces cerevisiae* cdc28, and *Schizosaccharomyces pombe* cdc2, and are known to be important regulators of cell cycle progression. This gene was identified as a gene absent in leukemic patients with chromosome 5q deletion. This loss may be an important determinant of dysmyelopoiesis. Alternative splicing results in multiple transcript variants encoding different isoforms. [provided by RefSeq, Jul 2008],catalytic activity:ATP + a protein = ADP + a phosphoprotein.,domain:The [NKR]KIAxRE motif seems to be a cyclin-binding region.,similarity:Belongs to the protein kinase superfamily. CMGC Ser/Thr protein kinase family. CDC2/CDKX subfamily.,similarity:Contains 1 protein kinase domain.,

## Research Area

## Image Data



Immunohistochemistry analysis of paraffin-embedded human skeletal muscle, using CDKL3 Antibody. The picture on the right is blocked with the synthesized peptide.