

---

**Product Name: Nidogen Rabbit Polyclonal Antibody****Catalog #: APRab14698**

For research use only.

**Summary**

<b>Description</b>	Rabbit polyclonal Antibody
<b>Host</b>	Rabbit
<b>Application</b>	WB,ELISA
<b>Reactivity</b>	Human,Mouse,Rat
<b>Conjugation</b>	Unconjugated
<b>Modification</b>	Unmodified
<b>Isotype</b>	IgG
<b>Clonality</b>	Polyclonal
<b>Form</b>	Liquid
<b>Concentration</b>	1mg/ml
<b>Storage</b>	Aliquot and store at -20°C (valid for 12 months). Avoid freeze/thaw cycles.
<b>Shipping</b>	Ice bags
<b>Buffer</b>	Liquid in PBS containing 50% glycerol, 0.5% protective protein and 0.02% New type preservative N.
<b>Purification</b>	Affinity purification

**Application**

<b>Dilution Ratio</b>	WB 1:500-1:2000,ELISA 1:10000-1:20000
<b>Molecular Weight</b>	136kDa

**Antigen Information**

<b>Gene Name</b>	NID1
<b>Alternative Names</b>	NID1; NID; Nidogen-1; NID-1; Entactin
<b>Gene ID</b>	4811.0
<b>SwissProt ID</b>	P14543
<b>Immunogen</b>	The antiserum was produced against synthesized peptide derived from human NID1. AA range:219-268

**Background**

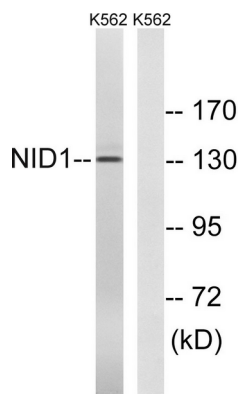
nidogen 1(NID1) Homo sapiens This gene encodes a member of the nidogen family of basement membrane glycoproteins.

The protein interacts with several other components of basement membranes, and may play a role in cell interactions with the extracellular matrix. [provided by RefSeq, Jul 2008],function:Sulfated glycoprotein widely distributed in basement membranes and tightly associated with laminin. Also binds to collagen IV and perlecan. It probably has a role in cell-extracellular matrix interactions.,PTM:N- and O-glycosylated.,similarity:Contains 1 NIDO domain.,similarity:Contains 1 nidogen G2 beta-barrel domain.,similarity:Contains 1 thyroglobulin type-1 domain.,similarity:Contains 4 LDL-receptor class B repeats.,similarity:Contains 6 EGF-like domains.,subunit:Interacts with FBLN1 and LGALS3BP.,

## Research Area

Signal Transduction

## Image Data



Western blot analysis of lysates from K562 cells, using NID1 Antibody. The lane on the right is blocked with the synthesized peptide.