
Product Name: NHERF-2 Rabbit Polyclonal Antibody**Catalog #: APRab14689**

For research use only.

Summary

Description	Rabbit polyclonal Antibody
Host	Rabbit
Application	WB,ELISA
Reactivity	Human,Mouse,Rat
Conjugation	Unconjugated
Modification	Unmodified
Isotype	IgG
Clonality	Polyclonal
Form	Liquid
Concentration	1mg/ml
Storage	Aliquot and store at -20°C (valid for 12 months). Avoid freeze/thaw cycles.
Shipping	Ice bags
Buffer	Liquid in PBS containing 50% glycerol, 0.5% protective protein and 0.02% New type preservative N.
Purification	Affinity purification

Application

Dilution Ratio	WB 1:500-1:2000,ELISA 1:5000-1:20000
Molecular Weight	37kDa

Antigen Information

Gene Name	SLC9A3R2
Alternative Names	SLC9A3R2; NHERF2; Na(+)/H(+) exchange regulatory cofactor NHE-RF2; NHERF-2; NHE3 kinase A regulatory protein E3KARP; SRY-interacting protein 1; SIP-1; Sodium-hydrogen exchanger regulatory factor 2; Solute carrier family 9 isoform A3 regulatory factor 2; Tyrosine kinase activator protein 1; TKA-1
Gene ID	9351.0
SwissProt ID	Q15599
Immunogen	Synthesized peptide derived from NHERF-2 . at AA range: 20-100

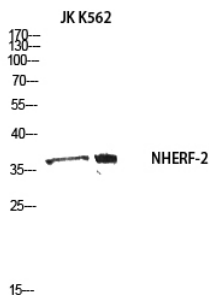
Background

This gene encodes a member of the NHERF family of PDZ scaffolding proteins. These proteins mediate many cellular processes by binding to and regulating the membrane expression and protein-protein interactions of membrane receptors and transport proteins. The encoded protein plays a role in intestinal sodium absorption by regulating the activity of the sodium/hydrogen exchanger 3, and may also regulate the cystic fibrosis transmembrane regulator (CFTR) ion channel. Alternatively spliced transcript variants encoding multiple isoforms have been observed for this gene. [provided by RefSeq, Nov 2011],function:Scaffold protein that connects plasma membrane proteins with members of the ezrin/moesin/radixin family and thereby helps to link them to the actin cytoskeleton and to regulate their surface expression. Necessary for cAMP-mediated phosphorylation and inhibition of SLC9A3. May also act as scaffold protein in the nucleus.,similarity:Contains 2 PDZ (DHR) domains.,subcellular location:Nuclear, in a punctate pattern.,subunit:Homodimer, and heterodimer with SLC9A3R1. Binds PODXL and PDZK1 (By similarity). Binds ADRB2, SLC9A3, P2RY1, P2YR2, SRY, RDX and LPAR2.,tissue specificity:Widely expressed.,

Research Area

Aldosterone-regulated sodium reabsorption;

Image Data



Western blot analysis of JK K562 using NHERF-2 antibody.. Secondary antibody was diluted at 1:20000