
Product Name: NHE-7 Rabbit Polyclonal Antibody**Catalog #: APRab14686**

For research use only.

Summary

Description	Rabbit polyclonal Antibody
Host	Rabbit
Application	WB,ELISA
Reactivity	Human,Mouse,Rat
Conjugation	Unconjugated
Modification	Unmodified
Isotype	IgG
Clonality	Polyclonal
Form	Liquid
Concentration	1mg/ml
Storage	Aliquot and store at -20°C (valid for 12 months). Avoid freeze/thaw cycles.
Shipping	Ice bags
Buffer	Liquid in PBS containing 50% glycerol, 0.5% protective protein and 0.02% New type preservative N.
Purification	Affinity purification

Application

Dilution Ratio	WB 1:500-1:2000,ELISA 1:5000-1:20000
Molecular Weight	80kDa

Antigen Information

Gene Name	SLC9A7
Alternative Names	SLC9A7; NHE7; Sodium/hydrogen exchanger 7; Na(+)/H(+) exchanger 7; NHE-7; Solute carrier family 9 member 7
Gene ID	84679.0
SwissProt ID	Q96T83
Immunogen	The antiserum was produced against synthesized peptide derived from human SLC9A7. AA range:531-580

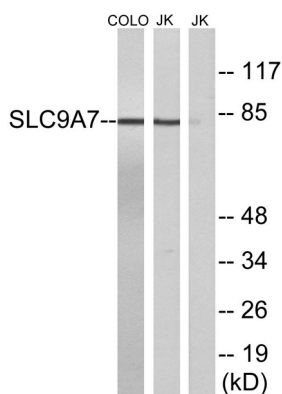
Background

This gene encodes a sodium and potassium/ proton antiporter that is a member of the solute carrier family 9 protein family. The encoded protein is primarily localized to the trans-Golgi network and is involved in maintaining pH homeostasis in organelles along the secretory and endocytic pathways. This protein may enhance cell growth of certain breast tumors. This gene is part of a gene cluster on chromosome Xp11.23. A pseudogene of this gene is found on chromosome 12. Alternate splicing results in multiple transcript variants. [provided by RefSeq, Mar 2012],function:Mediates electroneutral exchange of protons for Na(+) and K(+) across endomembranes. May contribute to Golgi volume and cation homeostasis.,miscellaneous:Is not inhibited by amiloride but by benzamil and quinine.,similarity:Belongs to the monovalent cation:proton antiporter 1 (CPA1) transporter (TC 2.A.36) family.,subunit:Interacts with SCAMP1, SCAMP2 and SCAMP5; may participate in its shuttling from trans-Golgi network to recycling endosomes.,tissue specificity:Ubiquitously expressed.,

Research Area

Tags & Cell Markers; Subcellular Markers; Organelles; Golgi; Signal Transduction; Metabolism; Plasma Membrane; Channels

Image Data



Western blot analysis of lysates from Jurkat and COLO cells, using SLC9A7 Antibody. The lane on the right is blocked with the synthesized peptide.