
Product Name: NEUS Rabbit Polyclonal Antibody**Catalog #: APRab14626**

For research use only.

Summary

Description	Rabbit polyclonal Antibody
Host	Rabbit
Application	WB,ELISA
Reactivity	Human,Rat,Mouse
Conjugation	Unconjugated
Modification	Unmodified
Isotype	IgG
Clonality	Polyclonal
Form	Liquid
Concentration	1mg/ml
Storage	Aliquot and store at -20°C (valid for 12 months). Avoid freeze/thaw cycles.
Shipping	Ice bags
Buffer	Liquid in PBS containing 50% glycerol, and 0.02% New type preservative N.
Purification	Affinity purification

Application

Dilution Ratio	WB 1:500-1:2000,ELISA 1:5000-1:20000
Molecular Weight	45kDa

Antigen Information

Gene Name	SERPINI1 PI12
Alternative Names	
Gene ID	5274.0
SwissProt ID	Q99574
Immunogen	Synthesized peptide derived from part region of human protein

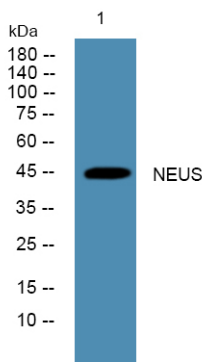
Background

This gene encodes a member of the serpin superfamily of serine proteinase inhibitors. The protein is primarily secreted by axons in the brain, and preferentially reacts with and inhibits tissue-type plasminogen activator. It is thought to play a role in the regulation of axonal growth and the development of synaptic plasticity. Mutations in this gene result in familial

encephalopathy with neuroserpin inclusion bodies (FENIB), which is a dominantly inherited form of familial encephalopathy and epilepsy characterized by the accumulation of mutant neuroserpin polymers. Multiple alternatively spliced variants, encoding the same protein, have been identified. [provided by RefSeq, Jul 2008],disease:Defects in SERPIN1 are the cause of familial encephalopathy with neuroserpin inclusion bodies (FEN1B) [MIM:604218]. FEN1B is characterized clinically as an autosomal dominantly inherited dementia, histologically by unique neuronal inclusion bodies and biochemically by polymers of neuroserpin.,function:Serine protease inhibitor that inhibits plasminogen activators and plasmin but not thrombin. May be involved in the formation or reorganization of synaptic connections as well as for synaptic plasticity in the adult nervous system. May protect neurons from cell damage by tissue-type plasminogen activator.,similarity:Belongs to the serpin family.,tissue specificity:Predominantly expressed in the brain.,

Research Area

Image Data



Western blot analysis of lysates from KB cells, NEUS Rabbit Polyclonal Antibody was diluted at 1:1000, 4° over night