

---

**Product Name: Neuro D Rabbit Polyclonal Antibody****Catalog #: APRab14601**

For research use only.

**Summary**

<b>Description</b>	Rabbit polyclonal Antibody
<b>Host</b>	Rabbit
<b>Application</b>	WB,IHC,ELISA
<b>Reactivity</b>	Human,Mouse,Rat
<b>Conjugation</b>	Unconjugated
<b>Modification</b>	Unmodified
<b>Isotype</b>	IgG
<b>Clonality</b>	Polyclonal
<b>Form</b>	Liquid
<b>Concentration</b>	1mg/ml
<b>Storage</b>	Aliquot and store at -20°C (valid for 12 months). Avoid freeze/thaw cycles.
<b>Shipping</b>	Ice bags
<b>Buffer</b>	Liquid in PBS containing 50% glycerol, 0.5% protective protein and 0.02% New type preservative N.
<b>Purification</b>	Affinity purification

**Application**

<b>Dilution Ratio</b>	WB 1:500-1:2000,IHC 1:50-1:300,ELISA 1:2000-1:20000
<b>Molecular Weight</b>	36kDa

**Antigen Information**

<b>Gene Name</b>	NEUROD1
<b>Alternative Names</b>	NEUROD1; BHLHA3; NEUROD; Neurogenic differentiation factor 1; NeuroD; NeuroD1; Class A basic helix-loop-helix protein 3; bHLHa3
<b>Gene ID</b>	4760.0
<b>SwissProt ID</b>	Q13562
<b>Immunogen</b>	The antiserum was produced against synthesized peptide derived from human NEUROD1. AA range:240-289

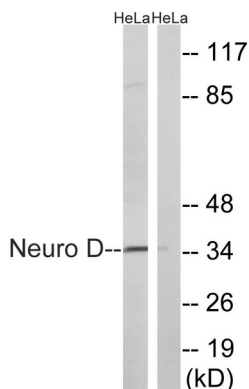
**Background**

This gene encodes a member of the NeuroD family of basic helix-loop-helix (bHLH) transcription factors. The protein forms heterodimers with other bHLH proteins and activates transcription of genes that contain a specific DNA sequence known as the E-box. It regulates expression of the insulin gene, and mutations in this gene result in type II diabetes mellitus. [provided by RefSeq, Jul 2008],disease:Defects in NEUROD1 are the cause of maturity onset diabetes of the young type 6 (MODY6) [MIM:606394]. MODY [MIM:606391] is characterized by an autosomal dominant mode of inheritance, onset during young adulthood and a primary defect in insulin secretion.,function:Differentiation factor required for dendrite morphogenesis and maintenance in the cerebellar cortex. Transcriptional activator. Binds to the insulin gene E-box.,PTM:Phosphorylated. In islet cells, phosphorylated on Ser-274 upon glucose stimulation; which may be required for nuclear localization. In activated neurons, phosphorylated on Ser-335; which promotes dendritic growth.,similarity:Contains 1 basic helix-loop-helix (bHLH) domain.,subunit:Efficient DNA binding requires dimerization with another bHLH protein. Heterodimer with TCF3/E47. Interacts with RREB1.,

## Research Area

Maturity onset diabetes of the young;

## Image Data



Western blot analysis of lysates from HeLa cells, using Neuro D Antibody. The lane on the right is blocked with the synthesized peptide.