
Product Name: Neurexophilin-4 Rabbit Polyclonal Antibody**Catalog #: APRab14600**

For research use only.

Summary

Description	Rabbit polyclonal Antibody
Host	Rabbit
Application	WB,IHC,ICC/IF,ELISA
Reactivity	Human,Rat
Conjugation	Unconjugated
Modification	Unmodified
Isotype	IgG
Clonality	Polyclonal
Form	Liquid
Concentration	1mg/ml
Storage	Aliquot and store at -20°C (valid for 12 months). Avoid freeze/thaw cycles.
Shipping	Ice bags
Buffer	Liquid in PBS containing 50% glycerol, 0.5% protective protein and 0.02% New type preservative N.
Purification	Affinity purification

Application

Dilution Ratio	WB 1:500-1:2000,IHC 1:100-1:300,ICC/IF 1:50-1:200,ELISA 1:20000-1:40000
Molecular Weight	33kDa

Antigen Information

Gene Name	NXPH4
Alternative Names	NXPH4; NPH4; Neurexophilin-4
Gene ID	11247.0
SwissProt ID	O95158
Immunogen	The antiserum was produced against synthesized peptide derived from human NXPH4. AA range:216-265

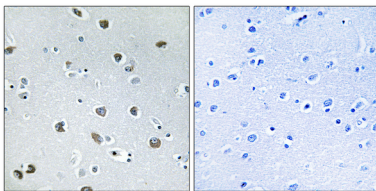
Background

function:May be signaling molecules that resemble neuropeptides and that act by binding to alpha-neurexins and possibly

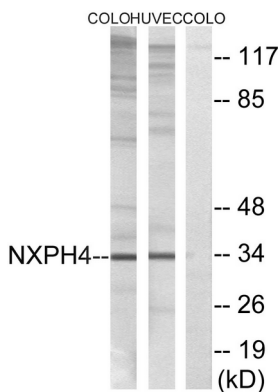
other receptors .,PTM:May be proteolytically processed at the boundary between the N-terminal non-conserved and the central conserved domain in neuron-like cells.,similarity:Belongs to the neurexophilin family.,tissue specificity:Expressed in brain, spleen, and testis.,function:May be signaling molecules that resemble neuropeptides and that act by binding to alpha-neurexins and possibly other receptors .,PTM:May be proteolytically processed at the boundary between the N-terminal non-conserved and the central conserved domain in neuron-like cells.,similarity:Belongs to the neurexophilin family.,tissue specificity:Expressed in brain, spleen, and testis.,

Research Area

Image Data



Immunohistochemistry analysis of paraffin-embedded human brain tissue, using NXPH4 Antibody. The picture on the right is blocked with the synthesized peptide.



Western blot analysis of lysates from COLO and HUVEC cells, using NXPH4 Antibody. The lane on the right is blocked with the synthesized peptide.



Western Blot analysis of various cells using Neurexophilin-4 Polyclonal Antibody