
Product Name: Neurexophilin-1 Rabbit Polyclonal Antibody**Catalog #: APRab14598**

For research use only.

Summary

| | |
|----------------------|---|
| Description | Rabbit polyclonal Antibody |
| Host | Rabbit |
| Application | WB,IHC,ICC/IF,ELISA |
| Reactivity | Human,Mouse,Rat |
| Conjugation | Unconjugated |
| Modification | Unmodified |
| Isotype | IgG |
| Clonality | Polyclonal |
| Form | Liquid |
| Concentration | 1mg/ml |
| Storage | Aliquot and store at -20°C (valid for 12 months). Avoid freeze/thaw cycles. |
| Shipping | Ice bags |
| Buffer | Liquid in PBS containing 50% glycerol, 0.5% protective protein and 0.02% New type preservative N. |
| Purification | Affinity purification |

Application

| | |
|-------------------------|---|
| Dilution Ratio | WB 1:500-1:2000,IHC 1:100-1:300,ICC/IF 1:50-1:200,ELISA 1:10000-1:20000 |
| Molecular Weight | 31kDa |

Antigen Information

| | |
|--------------------------|--|
| Gene Name | NXPH1 |
| Alternative Names | NXPH1; NPH1; Nbla00697; Neurexophilin-1 |
| Gene ID | 30010.0 |
| SwissProt ID | P58417 |
| Immunogen | The antiserum was produced against synthesized peptide derived from human NXPH1. AA range:77-126 |

Background

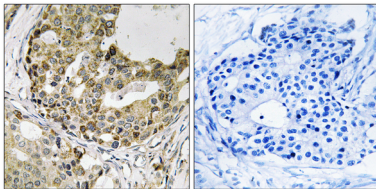
This gene is a member of the neurexophilin family and encodes a secreted protein with a variable N-terminal domain, a highly

conserved, N-glycosylated central domain, a short linker region, and a cysteine-rich C-terminal domain. This protein forms a very tight complex with alpha neurexins, a group of proteins that promote adhesion between dendrites and axons. [provided by RefSeq, Jul 2008],function:May be signaling molecules that resemble neuropeptides and that act by binding to alpha-neurexins and possibly other receptors .,similarity:Belongs to the neurexophilin family.,

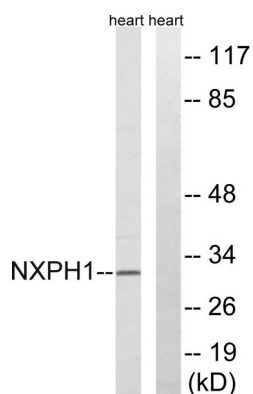
Research Area

Neurotransmitter; Neuropeptides; More Neuropeptides; Neuroscience; Neurotransmission; Intracellular Signaling; Regulation; Cell Adhesion Proteins; Membrane Proteins

Image Data



Immunohistochemistry analysis of paraffin-embedded human breast carcinoma tissue, using NXP1 Antibody. The picture on the right is blocked with the synthesized peptide.



Western blot analysis of lysates from rat heart cells, using NXP1 Antibody. The lane on the right is blocked with the synthesized peptide.