

Product Name: Nek7 Rabbit Polyclonal Antibody**Catalog #: APRab14558**

For research use only.

Summary

Description	Rabbit polyclonal Antibody
Host	Rabbit
Application	WB,IHC,ICC/IF,ELISA
Reactivity	Human,Mouse
Conjugation	Unconjugated
Modification	Unmodified
Isotype	IgG
Clonality	Polyclonal
Form	Liquid
Concentration	1mg/ml
Storage	Aliquot and store at -20°C (valid for 12 months). Avoid freeze/thaw cycles.
Shipping	Ice bags
Buffer	Liquid in PBS containing 50% glycerol, 0.5% protective protein and 0.02% New type preservative N.
Purification	Affinity purification

Application

Dilution Ratio	WB 1:500-1:2000,IHC 1:100-1:300,ICC/IF 1:50-1:200,ELISA 1:20000-1:40000
Molecular Weight	35kDa

Antigen Information

Gene Name	NEK7
Alternative Names	NEK7; Serine/threonine-protein kinase Nek7; Never in mitosis A-related kinase 7; NimA-related protein kinase 7
Gene ID	140609.0
SwissProt ID	Q8TDX7
Immunogen	The antiserum was produced against synthesized peptide derived from human NEK7. AA range:101-150

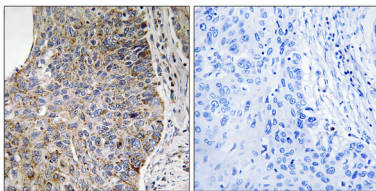
Background

NIMA-related kinases share high amino acid sequence identity with the gene product of the *Aspergillus nidulans* 'never in mitosis A' gene, which controls initiation of mitosis.[supplied by OMIM, Jul 2002],catalytic activity:ATP + a protein = ADP + a phosphoprotein.,cofactor:Magnesium.,similarity:Belongs to the protein kinase superfamily.,similarity:Belongs to the protein kinase superfamily. NEK Ser/Thr protein kinase family. NIMA subfamily.,similarity:Contains 1 protein kinase domain.,tissue specificity:Highly expressed in lung, muscle, testis, brain, heart, liver, leukocyte and spleen. Lower expression in ovary, prostate and kidney. No expression seen in small intestine.,

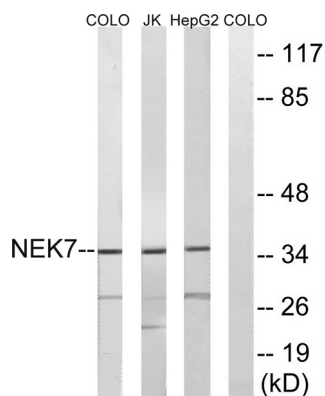
Research Area

Cell Biology

Image Data



Immunohistochemistry analysis of paraffin-embedded human lung carcinoma tissue, using NEK7 Antibody. The picture on the right is blocked with the synthesized peptide.



Western blot analysis of lysates from HepG2, Jurkat, and COLO cells, using NEK7 Antibody. The lane on the right is blocked with the synthesized peptide.