
Product Name: Nek4 Rabbit Polyclonal Antibody**Catalog #: APRab14553**

For research use only.

Summary

Description	Rabbit polyclonal Antibody
Host	Rabbit
Application	IHC,ICC/IF,ELISA
Reactivity	Human,Mouse,Rat
Conjugation	Unconjugated
Modification	Unmodified
Isotype	IgG
Clonality	Polyclonal
Form	Liquid
Concentration	1mg/ml
Storage	Aliquot and store at -20°C (valid for 12 months). Avoid freeze/thaw cycles.
Shipping	Ice bags
Buffer	Liquid in PBS containing 50% glycerol, 0.5% protective protein and 0.02% New type preservative N.
Purification	Affinity purification

Application

Dilution Ratio IHC 1:100-1:300,ICC/IF 1:50-1:200,ELISA 1:5000-1:20000

Molecular Weight

Antigen Information

Gene Name	NEK4 NEK4; STK2; Serine/threonine-protein kinase Nek4; Never in mitosis A-related kinase 4;
Alternative Names	NimA-related protein kinase 4; Serine/threonine-protein kinase 2; Serine/threonine-protein kinase NRK2
Gene ID	6787.0
SwissProt ID	P51957
Immunogen	Synthesized peptide derived from Nek4 . at AA range: 200-280

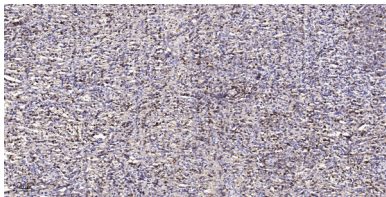
Background

catalytic activity:ATP + a protein = ADP + a phosphoprotein.,cofactor:Magnesium.,function:Seems to act exclusively upon threonine residues.,similarity:Belongs to the protein kinase superfamily.,similarity:Belongs to the protein kinase superfamily. NEK Ser/Thr protein kinase family. NIMA subfamily.,similarity:Contains 1 protein kinase domain.,tissue specificity:Highest expression in adult heart, followed by pancreas, skeletal muscle, brain, liver, kidney, lung and placenta. Present in most primary carcinomas.,catalytic activity:ATP + a protein = ADP + a phosphoprotein.,cofactor:Magnesium.,function:Seems to act exclusively upon threonine residues.,similarity:Belongs to the protein kinase superfamily.,similarity:Belongs to the protein kinase superfamily. NEK Ser/Thr protein kinase family. NIMA subfamily.,similarity:Contains 1 protein kinase domain.,tissue specificity:Highest expression in adult heart, followed by pancreas, skeletal muscle, brain, liver, kidney, lung and placenta. Present in most primary carcinomas.,

Research Area

Signal Transduction

Image Data



Immunohistochemical analysis of paraffin-embedded human spleen tissue. 1,Nek4 Rabbit Polyclonal Antibody was diluted at 1:200 (4° overnight) . 2, Sodium citrate pH 6.0 was used for antigen retrieval (>98°C,20min) . 3,Secondary antibody was diluted at 1:200.