
Product Name: NEGR1 Rabbit Polyclonal Antibody**Catalog #: APRab14544**

For research use only.

Summary

Description	Rabbit polyclonal Antibody
Host	Rabbit
Application	WB,ELISA
Reactivity	Human,Mouse,Rat
Conjugation	Unconjugated
Modification	Unmodified
Isotype	IgG
Clonality	Polyclonal
Form	Liquid
Concentration	1mg/ml
Storage	Aliquot and store at -20°C (valid for 12 months). Avoid freeze/thaw cycles.
Shipping	Ice bags
Buffer	Liquid in PBS containing 50% glycerol, 0.5% protective protein and 0.02% New type preservative N.
Purification	Affinity purification

Application

Dilution Ratio	WB 1:500-1:2000,ELISA 1:10000-1:20000
Molecular Weight	35kDa

Antigen Information

Gene Name	NEGR1
Alternative Names	NEGR1; IGLON4; Neuronal growth regulator 1; IGLON family member 4
Gene ID	257194.0
SwissProt ID	Q7Z3B1
Immunogen	The antiserum was produced against synthesized peptide derived from human NEGR1. AA range:172-221

Background

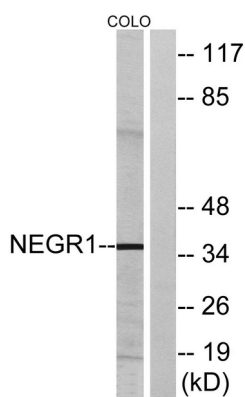
function:May be involved in cell-adhesion. May function as a trans-neural growth-promoting factor in regenerative axon

sprouting in the mammalian brain.,similarity:Belongs to the immunoglobulin superfamily. IgLON family.,similarity:Contains 3 Ig-like C2-type (immunoglobulin-like) domains.,function:May be involved in cell-adhesion. May function as a trans-neural growth-promoting factor in regenerative axon sprouting in the mammalian brain.,similarity:Belongs to the immunoglobulin superfamily. IgLON family.,similarity:Contains 3 Ig-like C2-type (immunoglobulin-like) domains.,

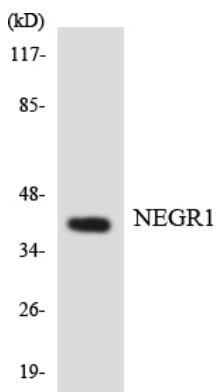
Research Area

Cell adhesion molecules (CAMs);

Image Data



Western blot analysis of lysates from COLO cells, using NEGR1 Antibody. The lane on the right is blocked with the synthesized peptide.



Western blot analysis of the lysates from COLO205 cells using NEGR1 antibody.



Western Blot analysis of various cells using NEGR1 Polyclonal Antibody