
Product Name: NEDL2 Rabbit Polyclonal Antibody**Catalog #: APRab14540**

For research use only.

Summary

Description	Rabbit polyclonal Antibody
Host	Rabbit
Application	WB,ELISA
Reactivity	Human,Rat,Mouse
Conjugation	Unconjugated
Modification	Unmodified
Isotype	IgG
Clonality	Polyclonal
Form	Liquid
Concentration	1mg/ml
Storage	Aliquot and store at -20°C (valid for 12 months). Avoid freeze/thaw cycles.
Shipping	Ice bags
Buffer	Liquid in PBS containing 50% glycerol, 0.5% protective protein and 0.02% New type preservative N.
Purification	Affinity purification

Application

Dilution Ratio	WB 1:500-1:2000,ELISA 1:5000-1:20000
Molecular Weight	140-150kDa

Antigen Information

Gene Name	HECW2
Alternative Names	HECW2; KIAA1301; NEDL2; E3 ubiquitin-protein ligase HECW2; HECT; C2 and WW domain-containing protein 2; NEDD4-like E3 ubiquitin-protein ligase 2
Gene ID	57520.0
SwissProt ID	Q9P2P5
Immunogen	The antiserum was produced against synthesized peptide derived from human HECW2. AA range:481-530

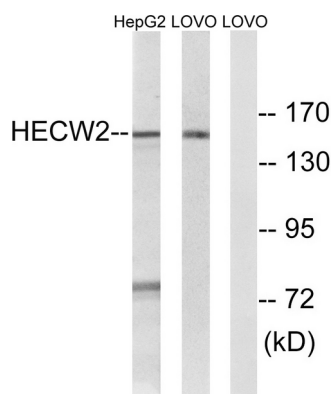
Background

function:E3 ubiquitin-protein ligase that mediates ubiquitination of TP73. Acts to stabilize TP73 and enhance activation of transcription by TP73.,pathway:Protein modification; protein ubiquitination.,similarity:Contains 1 C2 domain.,similarity:Contains 1 HECT (E6AP-type E3 ubiquitin-protein ligase) domain.,similarity:Contains 2 WW domains.,subunit:Interacts with TP73.,tissue specificity:Predominantly expressed in adult brain, lung and heart.,function:E3 ubiquitin-protein ligase that mediates ubiquitination of TP73. Acts to stabilize TP73 and enhance activation of transcription by TP73.,pathway:Protein modification; protein ubiquitination.,similarity:Contains 1 C2 domain.,similarity:Contains 1 HECT (E6AP-type E3 ubiquitin-protein ligase) domain.,similarity:Contains 2 WW domains.,subunit:Interacts with TP73.,tissue specificity:Predominantly expressed in adult brain, lung and heart.,

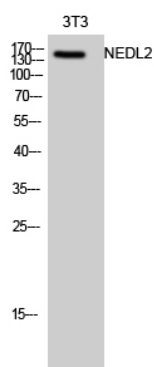
Research Area

Cell Biology; Proteolysis / Ubiquitin; Proteasome / Ubiquitin; Ubiquitin E3 Enzymes; Other E3 Ligases

Image Data



Western blot analysis of lysates from LOVO and HepG2 cells, using HECW2 Antibody. The lane on the right is blocked with the synthesized peptide.



Western Blot analysis of 3T3 cells using NEDL2 Polyclonal Antibody diluted at 1 : 1000