

Product Name: Nectin 4 Rabbit Polyclonal Antibody**Catalog #: APRab14534**

For research use only.

Summary

Description	Rabbit polyclonal Antibody
Host	Rabbit
Application	WB,ELISA
Reactivity	Human,Rat,Mouse
Conjugation	Unconjugated
Modification	Unmodified
Isotype	IgG
Clonality	Polyclonal
Form	Liquid
Concentration	1mg/ml
Storage	Aliquot and store at -20°C (valid for 12 months). Avoid freeze/thaw cycles.
Shipping	Ice bags
Buffer	Liquid in PBS containing 50% glycerol, 0.5% protective protein and 0.02% New type preservative N.
Purification	Affinity purification

Application

Dilution Ratio	WB 1:500-1:2000,ELISA 1:5000-1:10000
Molecular Weight	55kDa

Antigen Information

Gene Name	PVRL4
Alternative Names	PVRL4; LNIR; PRR4; Poliovirus receptor-related protein 4; Ig superfamily receptor LNIR; Nectin-4
Gene ID	81607.0
SwissProt ID	Q96NY8
Immunogen	The antiserum was produced against synthesized peptide derived from human PVRL4. AA range:312-361

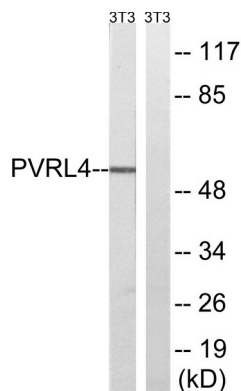
Background

This gene encodes a member of the nectin family. The encoded protein contains two immunoglobulin-like (Ig-like) C2-type domains and one Ig-like V-type domain. It is involved in cell adhesion through trans-homophilic and -heterophilic interactions. It is a single-pass type I membrane protein. The soluble form is produced by proteolytic cleavage at the cell surface by the metalloproteinase ADAM17/TACE. The secreted form is found in both breast tumor cell lines and breast tumor patients. Mutations in this gene are the cause of ectodermal dysplasia-syndactyly syndrome type 1, an autosomal recessive disorder. Alternatively spliced transcript variants have been found but the full-length nature of the variant has not been determined. [provided by RefSeq, Jan 2011],function:Seems to be involved in cell adhesion through trans-homophilic and -heterophilic interactions, the latter including specifically interactions with PVRL2/nectin-1. Does not act as receptor for alpha-herpesvirus entry into cells.,PTM:The soluble form is produced by proteolytic cleavage at the cell surface (shedding), probably by ADAM17/TACE.,similarity:Belongs to the nectin family.,similarity:Contains 1 Ig-like V-type (immunoglobulin-like) domain.,similarity:Contains 2 Ig-like C2-type (immunoglobulin-like) domains.,subcellular location:Colocalizes with MLLT4 at cadherin-based adherens junctions.,subcellular location:The secreted form is found in breast tumor patients.,subunit:Self-associates. Interacts via its Ig-like V-type domain with PVRL1/nectin-1 Ig-like V-type domain. Interacts via its C-terminus with MLLT4.,tissue specificity:Predominantly expressed in placenta. Not detected in normal breast epithelium but expressed in breast carcinoma.,

Research Area

Adherens_Junction;

Image Data



Western blot analysis of lysates from NIH/3T3 cells, using PVRL4 Antibody. The lane on the right is blocked with the synthesized peptide.