

Product Name: Nectin 2 Rabbit Polyclonal Antibody**Catalog #: APRab14531**

For research use only.

Summary

| | |
|----------------------|---|
| Description | Rabbit polyclonal Antibody |
| Host | Rabbit |
| Application | WB,ELISA |
| Reactivity | Human,Rat,Mouse |
| Conjugation | Unconjugated |
| Modification | Unmodified |
| Isotype | IgG |
| Clonality | Polyclonal |
| Form | Liquid |
| Concentration | 1mg/ml |
| Storage | Aliquot and store at -20°C (valid for 12 months). Avoid freeze/thaw cycles. |
| Shipping | Ice bags |
| Buffer | Liquid in PBS containing 50% glycerol, 0.5% protective protein and 0.02% New type preservative N. |
| Purification | Affinity purification |

Application

| | |
|-------------------------|--------------------------------------|
| Dilution Ratio | WB 1:500-1:2000,ELISA 1:5000-1:20000 |
| Molecular Weight | 65kDa |

Antigen Information

| | |
|--------------------------|--|
| Gene Name | PVRL2 |
| Alternative Names | PVRL2; HVEB; PRR2; Poliovirus receptor-related protein 2; Herpes virus entry mediator B; Herpesvirus entry mediator B; HveB; Nectin-2; CD112 |
| Gene ID | 5819.0 |
| SwissProt ID | Q92692 |
| Immunogen | Synthesized peptide derived from Poliovirus receptor-related protein 2 at AA range: 151-200 |

Background

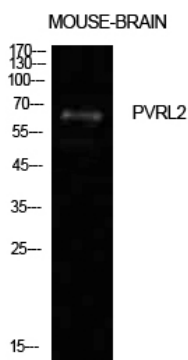
This gene encodes a single-pass type I membrane glycoprotein with two Ig-like C2-type domains and an Ig-like V-type domain.

This protein is one of the plasma membrane components of adherens junctions. It also serves as an entry for certain mutant strains of herpes simplex virus and pseudorabies virus, and it is involved in cell to cell spreading of these viruses. Variations in this gene have been associated with differences in the severity of multiple sclerosis. Alternate transcriptional splice variants, encoding different isoforms, have been characterized. [provided by RefSeq, Jul 2008],function:Probable cell adhesion protein.,similarity:Belongs to the nectin family.,similarity:Contains 1 Ig-like V-type (immunoglobulin-like) domain.,similarity:Contains 2 Ig-like C2-type (immunoglobulin-like) domains.,subunit:Can form trans-heterodimers with PVRL3/nectin-3 (By similarity). Interacts with CD226. Receptor for alphaherpesvirus (HSV-1, HSV-2 and pseudorabies virus) entry into cells. Binds with low affinity to TIGIT.,tissue specificity:Ubiquitous.,

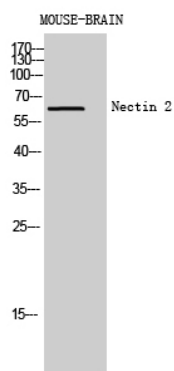
Research Area

Cell adhesion molecules (CAMs);Adherens_Junction;

Image Data



Western Blot analysis of mouse brain cells using Nectin 2 Polyclonal Antibody. Antibody was diluted at 1:500. Secondary antibody was diluted at 1:20000



Western Blot analysis of MOUSE-BRAIN cells using Nectin 2 Polyclonal Antibody diluted at 1: 500. Secondary antibody was diluted at 1:20000