

Product Name: NDUFS6 Rabbit Polyclonal Antibody**Catalog #: APRab14518**

For research use only.

Summary

Description	Rabbit polyclonal Antibody
Host	Rabbit
Application	IHC, ICC/IF, ELISA
Reactivity	Human, Mouse, Rat
Conjugation	Unconjugated
Modification	Unmodified
Isotype	IgG
Clonality	Polyclonal
Form	Liquid
Concentration	1mg/ml
Storage	Aliquot and store at -20°C (valid for 12 months). Avoid freeze/thaw cycles.
Shipping	Ice bags
Buffer	Liquid in PBS containing 50% glycerol, 0.5% protective protein and 0.02% New type preservative N.
Purification	Affinity purification

Application

Dilution Ratio IHC 1:100-1:300, ICC/IF 1:50-1:200, ELISA 1:5000-1:20000

Molecular Weight

Antigen Information

Gene Name	NDUFS6
Alternative Names	NDUFS6; NADH dehydrogenase [ubiquinone] iron-sulfur protein 6; mitochondrial; Complex I-13kD-A; CI-13kD-A; NADH-ubiquinone oxidoreductase 13 kDa-A subunit
Gene ID	4726.0
SwissProt ID	O75380
Immunogen	The antiserum was produced against synthesized peptide derived from human NDUFS6. AA range:75-124

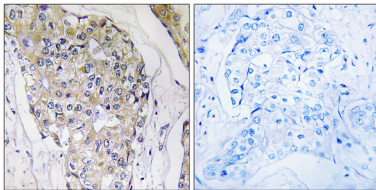
Background

This gene encodes a subunit of the NADH:ubiquinone oxidoreductase (complex I), which is the first enzyme complex in the electron transport chain of mitochondria. This complex functions in the transfer of electrons from NADH to the respiratory chain. The subunit encoded by this gene is one of seven subunits in the iron-sulfur protein fraction. Mutations in this gene cause mitochondrial complex I deficiency, a disease that causes a wide variety of clinical disorders, including neonatal disease and adult-onset neurodegenerative disorders.[provided by RefSeq, Oct 2009],function:Accessory subunit of the mitochondrial membrane respiratory chain NADH dehydrogenase (Complex I), that is believed to be not involved in catalysis. Complex I functions in the transfer of electrons from NADH to the respiratory chain. The immediate electron acceptor for the enzyme is believed to be ubiquinone.,similarity:Belongs to the complex I NDUF56 subunit family.,subunit:Mammalian complex I is composed of 45 different subunits. This is a component of the iron-sulfur (IP) fragment of the enzyme.,

Research Area

Oxidative phosphorylation;Alzheimer's disease;Parkinson's disease;Huntington's disease;

Image Data



Immunohistochemistry analysis of paraffin-embedded human breast carcinoma tissue, using NDUFS6 Antibody. The picture on the right is blocked with the synthesized peptide.