

---

**Product Name: NCoA-7 Rabbit Polyclonal Antibody****Catalog #: APRab14456**

For research use only.

**Summary**

<b>Description</b>	Rabbit polyclonal Antibody
<b>Host</b>	Rabbit
<b>Application</b>	WB,IHC,ICC/IF,ELISA
<b>Reactivity</b>	Human,Rat,Mouse
<b>Conjugation</b>	Unconjugated
<b>Modification</b>	Unmodified
<b>Isotype</b>	IgG
<b>Clonality</b>	Polyclonal
<b>Form</b>	Liquid
<b>Concentration</b>	1mg/ml
<b>Storage</b>	Aliquot and store at -20°C (valid for 12 months). Avoid freeze/thaw cycles.
<b>Shipping</b>	Ice bags
<b>Buffer</b>	Liquid in PBS containing 50% glycerol, 0.5% protective protein and 0.02% New type preservative N.
<b>Purification</b>	Affinity purification

**Application**

<b>Dilution Ratio</b>	WB 1:500-1:2000,IHC 1:100-1:300,ICC/IF 1:50-1:200,ELISA 1:10000-1:20000
<b>Molecular Weight</b>	106kDa

**Antigen Information**

<b>Gene Name</b>	NCOA7
<b>Alternative Names</b>	NCOA7; ERAP140; ESNA1; Nbla00052; Nbla10993; Nuclear receptor coactivator 7; 140 kDa estrogen receptor-associated protein; Estrogen nuclear receptor coactivator 1
<b>Gene ID</b>	135112.0
<b>SwissProt ID</b>	Q8NI08
<b>Immunogen</b>	The antiserum was produced against synthesized peptide derived from human NCOA7. AA range:422-471

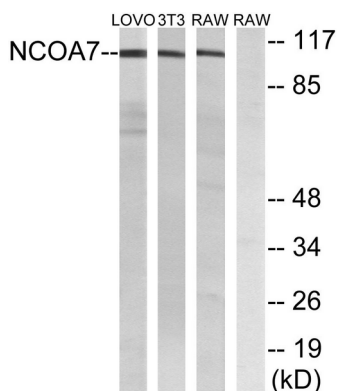
**Background**

function:Enhances the transcriptional activities of several nuclear receptors. Involved in the coactivation of different nuclear receptors, such as ESR1, THRB, PPARG and RARA.,similarity:Belongs to the OXR1 family.,similarity:Contains 1 LysM repeat.,similarity:Contains 1 TLD domain.,subunit:Interacts with ESR1, ESR2A, ESR2B, THRB, PPARG and RARA in a ligand-inducible manner. Interacts with the heterodimer AHR-ARNT.,tissue specificity:Highly expressed in brain. Weakly expressed in mammary gland, ovary, uterus, prostate, stomach, bladder, spinal cord and pancreas. Expressed in cancer cell line.,function:Enhances the transcriptional activities of several nuclear receptors. Involved in the coactivation of different nuclear receptors, such as ESR1, THRB, PPARG and RARA.,similarity:Belongs to the OXR1 family.,similarity:Contains 1 LysM repeat.,similarity:Contains 1 TLD domain.,subunit:Interacts with ESR1, ESR2A, ESR2B, THRB, PPARG and RARA in a ligand-inducible manner. Interacts with the heterodimer AHR-ARNT.,tissue specificity:Highly expressed in brain. Weakly expressed in mammary gland, ovary, uterus, prostate, stomach, bladder, spinal cord and pancreas. Expressed in cancer cell line.,

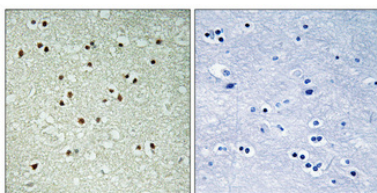
## Research Area

Nuclear Signaling Pathways; Nuclear Receptors; Co-activators/co-repressors; Epigenetics and Nuclear Signaling; Transcription; Co-factors; Signal Transduction; Signaling Pathway; Nuclear Signaling; Nuclear Hormone Receptors

## Image Data



Western blot analysis of lysates from LOVO, NIH/3T3, and RAW264.7 cells, using NCOA7 Antibody. The lane on the right is blocked with the synthesized peptide.



Immunohistochemical analysis of paraffin-embedded Human brain. Antibody was diluted at 1:100 (4°,overnight) . High-pressure and temperature Tris-EDTA,pH8.0 was used for antigen retrieval. Negative contrl (right) obtaned from antibody was pre-absorbed by immunogen peptide.