

Product Name: NCKX4 Rabbit Polyclonal Antibody**Catalog #: APRab14451**

For research use only.

Summary

Description	Rabbit polyclonal Antibody
Host	Rabbit
Application	WB,ELISA
Reactivity	Human,Mouse,Rat
Conjugation	Unconjugated
Modification	Unmodified
Isotype	IgG
Clonality	Polyclonal
Form	Liquid
Concentration	1mg/ml
Storage	Aliquot and store at -20°C (valid for 12 months). Avoid freeze/thaw cycles.
Shipping	Ice bags
Buffer	Liquid in PBS containing 50% glycerol, 0.5% protective protein and 0.02% New type preservative N.
Purification	Affinity purification

Application

Dilution Ratio	WB 1:500-1:2000,ELISA 1:20000-1:40000
Molecular Weight	60kDa

Antigen Information

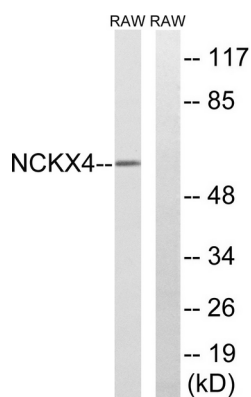
Gene Name	SLC24A4
Alternative Names	SLC24A4; NCKX4; Sodium/potassium/calcium exchanger 4; Na(+)/K(+)/Ca(2+)-exchange protein 4; Solute carrier family 24 member 4
Gene ID	123041.0
SwissProt ID	Q8NFF2
Immunogen	The antiserum was produced against synthesized peptide derived from human SLC24A4. AA range:328-377

Background

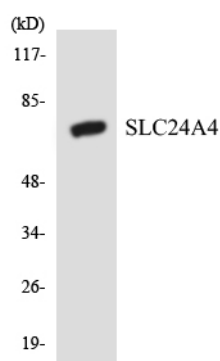
This gene encodes a member of the potassium-dependent sodium/calcium exchanger protein family. Alternative splicing results in multiple transcript variants.[provided by RefSeq, Jul 2010],caution:The sequence shown here is derived from an Ensembl automatic analysis pipeline and should be considered as preliminary data.,function:Transports 1 Ca(2+) and 1 K(+) in exchange for 4 Na(+).,polymorphism:Genetic variations in SLC24A4 are associated with skin/hair/eye pigmentation type 6 (SHEP6) [MIM:210750]. Hair, eye and skin pigmentation are among the most visible examples of human phenotypic variation, with a broad normal range that is subject to substantial geographic stratification. In the case of skin, individuals tend to have lighter pigmentation with increasing distance from the equator. By contrast, the majority of variation in human eye and hair color is found among individuals of European ancestry, with most other human populations fixed for brown eyes and black hair.,similarity:Belongs to the sodium/potassium/calcium exchanger family. SLC24A subfamily.,tissue specificity:Expressed abundantly in all regions of the brain, aorta, lung and thymus. Expressed at lower levels in the stomach and intestine.,

Research Area

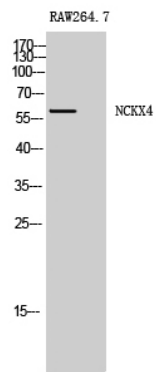
Image Data



Western blot analysis of lysates from RAW264.7 cells, using SLC24A4 Antibody. The lane on the right is blocked with the synthesized peptide.



Western blot analysis of the lysates from HeLa cells using SLC24A4 antibody.



Western Blot analysis of RAW264.7 cells using NCKX4 Polyclonal Antibody