

**Product Name: NCKX3 Rabbit Polyclonal Antibody****Catalog #: APRab14450**

For research use only.

**Summary**

|                      |   |
|----------------------|---|
| <b>Description</b>   | Rabbit polyclonal Antibody  |
| <b>Host</b>          | Rabbit  |
| <b>Application</b>   | WB,ELISA  |
| <b>Reactivity</b>    | Human,Mouse,Rat   |
| <b>Conjugation</b>   | Unconjugated  |
| <b>Modification</b>  | Unmodified  |
| <b>Isotype</b>       | IgG   |
| <b>Clonality</b>     | Polyclonal  |
| <b>Form</b>          | Liquid  |
| <b>Concentration</b> | 1mg/ml  |
| <b>Storage</b>       | Aliquot and store at -20°C (valid for 12 months). Avoid freeze/thaw cycles.                       |
| <b>Shipping</b>      | Ice bags  |
| <b>Buffer</b>        | Liquid in PBS containing 50% glycerol, 0.5% protective protein and 0.02% New type preservative N. |
| <b>Purification</b>  | Affinity purification   |

**Application**

|                         |                                       |
|-------------------------|---------------------------------------|
| <b>Dilution Ratio</b>   | WB 1:500-1:2000,ELISA 1:10000-1:20000 |
| <b>Molecular Weight</b> | 60kDa                                 |

**Antigen Information**

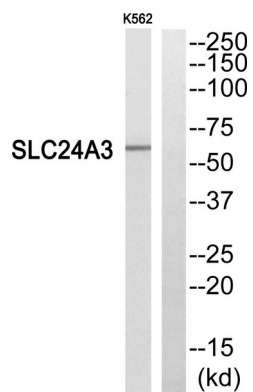
|                          |   |
|--------------------------|---|
| <b>Gene Name</b>         | SLC24A3   |
| <b>Alternative Names</b> | SLC24A3; NCKX3; Sodium/potassium/calcium exchanger 3; Na(+)/K(+)/Ca(2+)-exchange protein 3; Solute carrier family 24 member 3 |
| <b>Gene ID</b>           | 57419.0   |
| <b>SwissProt ID</b>      | Q9HC58  |
| <b>Immunogen</b>         | The antiserum was produced against synthesized peptide derived from human SLC24A3. AA range:354-403                           |

**Background**

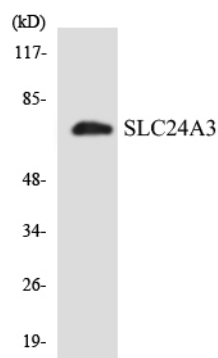
Plasma membrane sodium/calcium exchangers are an important component of intracellular calcium homeostasis and electrical conduction. Potassium-dependent sodium/calcium exchangers such as SLC24A3 are believed to transport 1 intracellular calcium and 1 potassium ion in exchange for 4 extracellular sodium ions (Kraev et al., 2001 [PubMed 11294880]).[supplied by OMIM, Mar 2008],function:Transports 1 Ca(2+) and 1 K(+) in exchange for 4 Na(+),similarity:Belongs to the sodium/potassium/calcium exchanger family. SLC24A subfamily.,tissue specificity:Abundant in the brain. Expressed at low levels in the aorta, uterus and intestine.,

## Research Area

## Image Data



Western blot analysis of SLC24A3 Antibody. The lane on the right is blocked with the SLC24A3 peptide.



Western blot analysis of the lysates from K562 cells using SLC24A3 antibody.