

---

**Product Name: NCKX1 Rabbit Polyclonal Antibody****Catalog #: APRab14448**

For research use only.

**Summary**

<b>Description</b>	Rabbit polyclonal Antibody
<b>Host</b>	Rabbit
<b>Application</b>	WB,ELISA
<b>Reactivity</b>	Human,Rat,Mouse
<b>Conjugation</b>	Unconjugated
<b>Modification</b>	Unmodified
<b>Isotype</b>	IgG
<b>Clonality</b>	Polyclonal
<b>Form</b>	Liquid
<b>Concentration</b>	1mg/ml
<b>Storage</b>	Aliquot and store at -20°C (valid for 12 months). Avoid freeze/thaw cycles.
<b>Shipping</b>	Ice bags
<b>Buffer</b>	Liquid in PBS containing 50% glycerol, 0.5% protective protein and 0.02% New type preservative N.
<b>Purification</b>	Affinity purification

**Application**

<b>Dilution Ratio</b>	WB 1:500-1:2000,ELISA 1:5000-1:20000
<b>Molecular Weight</b>	125kDa

**Antigen Information**

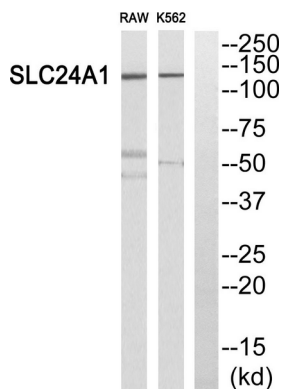
<b>Gene Name</b>	SLC24A1
<b>Alternative Names</b>	SLC24A1; KIAA0702; NCKX1; Sodium/potassium/calcium exchanger 1; Na(+)/K(+)/Ca(2+)-exchange protein 1; Retinal rod Na-Ca+K exchanger
<b>Gene ID</b>	9187.0
<b>SwissProt ID</b>	O60721
<b>Immunogen</b>	The antiserum was produced against synthesized peptide derived from human SLC24A1. AA range:154-203

**Background**

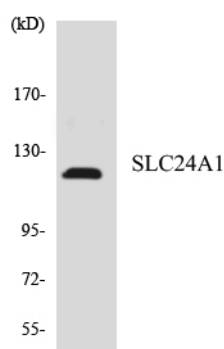
This gene encodes a member of the potassium-dependent sodium/calcium exchanger protein family. The encoded protein plays an important role in sodium/calcium exchange in retinal rod and cone photoreceptors by mediating the extrusion of one calcium ion and one potassium ion in exchange for four sodium ions. Mutations in this gene may play a role in congenital stationary night blindness. Alternatively spliced transcript variants encoding multiple isoforms have been observed for this gene. [provided by RefSeq, Dec 2011],function:Critical component of the visual transduction cascade, controlling the calcium concentration of outer segments during light and darkness. Light causes a rapid lowering of cytosolic free calcium in the outer segment of both retinal rod and cone photoreceptors and the light-induced lowering of calcium is caused by extrusion via this protein which plays a key role in the process of light adaptation. Transports 1 Ca(2+) and 1 K(+) in exchange for 4 Na(+),PTM:The uncleaved signal sequence is required for efficient membrane targeting and proper membrane integration.,similarity:Belongs to the sodium/potassium/calcium exchanger family. SLC24A subfamily.,tissue specificity:Found only in the outer segments of retinal rod photoreceptors.,

## Research Area

## Image Data



Western blot analysis of SLC24A1 Antibody. The lane on the right is blocked with the SLC24A1 peptide.



Western blot analysis of the lysates from HepG2 cells using SLC24A1 antibody.