

Product Name: NBPF5 Rabbit Polyclonal Antibody**Catalog #: APRab14427**

For research use only.

Summary

Description	Rabbit polyclonal Antibody
Host	Rabbit
Application	WB,IHC,ICC/IF,ELISA
Reactivity	Human,Rat,Mouse
Conjugation	Unconjugated
Modification	Unmodified
Isotype	IgG
Clonality	Polyclonal
Form	Liquid
Concentration	1mg/ml
Storage	Aliquot and store at -20°C (valid for 12 months). Avoid freeze/thaw cycles.
Shipping	Ice bags
Buffer	Liquid in PBS containing 50% glycerol, 0.5% protective protein and 0.02% New type preservative N.
Purification	Affinity purification

Application

Dilution Ratio	WB 1:500-1:2000,IHC 1:100-1:300,ICC/IF 1:50-1:200,ELISA 1:5000-1:20000
Molecular Weight	41kDa

Antigen Information

Gene Name	NBPF5
Alternative Names	NBPF5; Neuroblastoma breakpoint family member 5
Gene ID	284610.0
SwissProt ID	Q86XG9
Immunogen	The antiserum was produced against synthesized peptide derived from human NBPF5. AA range:302-351

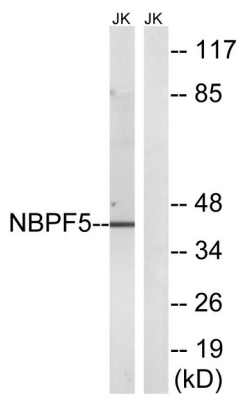
Background

NBPF5 (neuroblastoma breakpoint family member 5) is a 351 amino acid cytoplasmic protein that is expressed in medulla and

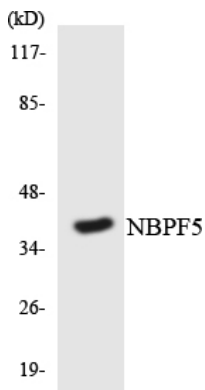
brain and belongs to the NBPF family. NBPF5 contains one NBPF domain and is encoded by a gene that maps to human chromosome 1p13. Chromosome 1 spans 260 million base pairs, contains over 3000 genes and comprises nearly 8% of the human genome. Chromosome 1 houses a large number of disease-associated genes, including those that are involved in familial adenomatous polyposis, Stickler syndrome, Parkinson's disease, Gaucher disease, schizophrenia and Usher syndrome. Aberrations in chromosome 1 are found in a variety of cancers, including head and neck cancer, malignant melanoma and multiple myeloma.

Research Area

Image Data



Western blot analysis of lysates from Jurkat cells, using NBPF5 Antibody. The lane on the right is blocked with the synthesized peptide.



Western blot analysis of the lysates from K562 cells using NBPF5 antibody.